

P2200W/P2500W Serial Printers FAQ:

① WI-FI Settings:	4
1. How to set up my Pantum P2500w Printer to a Wireless Network easily?	4
2. How do I setup a password for my WI-FI Connection?.....	6
3. How do I take a mobile print out from Android?.....	9
4. How do I take a mobile print out from IOS?	9
5. Does my Pantum P2500W works on Windows Mobile?	10
6. How to print a PDF file from mobile phone?	10
7. Where can I download the soft wares and drivers for my printer P2500W?	12
8. When I connect the printer with PC by WI-FI, Why it need more than 5 minutes from I send the order until it finally print out?	14
9. How to solve the wireless Connection Failed when it showed "The printer cannot connect to any wireless network with the wireless credentials provided"?	15
10. What's the WIFI default password of printer's wireless hotspot?	16
11. How to Close WIFI Hotpot Setting?	16
② Cartridge Issues:.....	19
12. How do I replace or insert a cartridge?.....	19
13. How do I check the amount of toner left in my cartridge?	19
14. How do I check how many pages I have printed so far?.....	20
15. What are the cartridge models for P2500 series printer?	21
16. Why the second LED shows orange when I insert a new cartridge?	21
17. How about the standard page yield of toner PA/PB/PC-210?.....	21
③ Papers Issues:.....	22
18. How can I clear any paper jam?	22
19. Print jobs stuck in paper curve. What should I do?	22

20. What does the Blinking Lights notifications mean?.....	23
21. How to cancel the “duplex printing” on Windows?.....	23
22. How to check the toner’s serial number location:.....	24
23. How to check the printer’s serial number location:	25
24. How to adjust letter format in the printing document?	26
25. What is my Printer Specifications?	30
26. What kinds of paper can I use in my Pantum P2500W?	31
27. How to print multipage on one page ?	31
28.How to do Duplex Printing on Windows system?	33
④ Printer Compatible Versions:	34
29. Is my printer mac compatible? What are the versions that it is compatible with?.....	34
30. Is my printer Linux compatible? What are the versions that it is compatible with?	34
31. Is my printer Windows compatible? What are the versions that it is compatible with?	34
32. Could I download the APP from Google Play?	34
33. Is my printer compatible with Chrome OS system?.....	34
34. Is my printer compatible with Linux OpenSuse system?	35
35. Is my printer compatible with Linux Debian 9 system?	35
⑤ Normal Printer Issues:.....	35
36. Why the printer could not print the horizontal line in the page when printed out?	35
37. Why the printer could not feed paper successfully?	36
38. Why it will be smoked when printing?	37
39. What is the power requirement will be need?	37
40. How to change the printing port is available when it showed” Printing port is on used”?.....	37
41. How to cancel a printing job in the queue?	39
42. Is it possible to close the ‘Auto sleeping time’?.....	40

43. How to get the printer to print darker under Windows?	41
44. How to get the printer to print darker under Mac?	41
45. How to “add a printer “by manually under Windows?.....	43
46. How to “add a printer “by manually under Mac?.....	47
47. How to Download the User Manual Successfully?	49
48. How to Print Information Pages from printer?.....	52

P2200W/P2500W Serial Printers FAQ:

① WI-FI Settings:

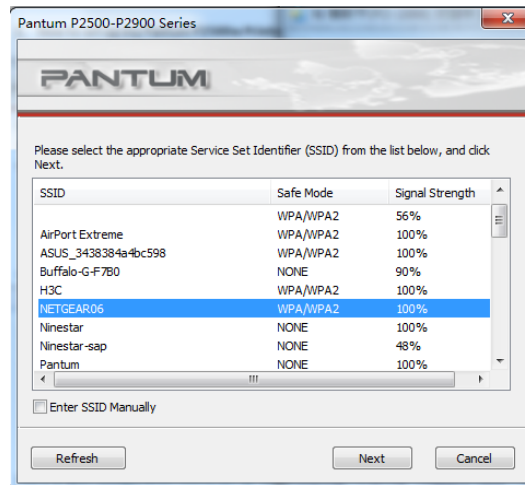
1. How to set up my Pantum P2500w Printer to a Wireless Network easily?

Here is the installation step:

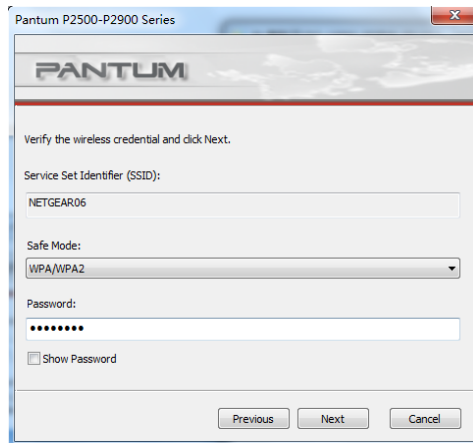
1) Setup interface.



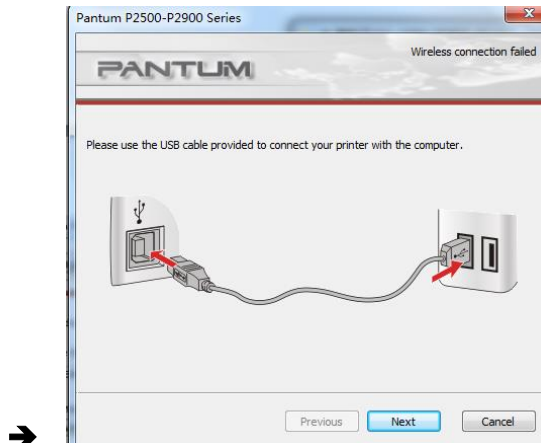
2) Choose the WIFI name.



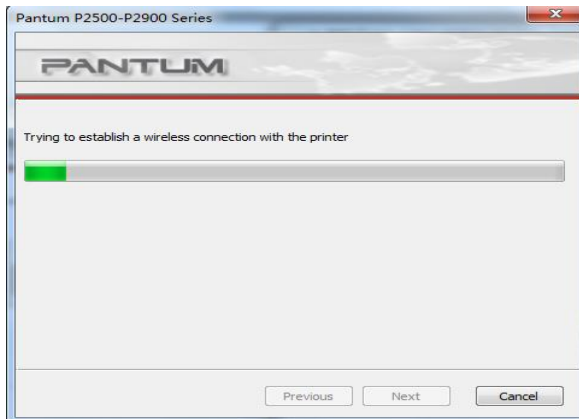
3) Input WIFI Router Password.



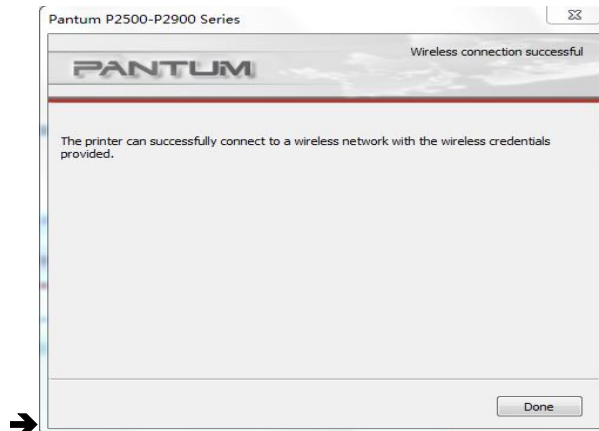
4) make sure USB Cable is connected with PC & Printer.



5) Connecting WIFI.



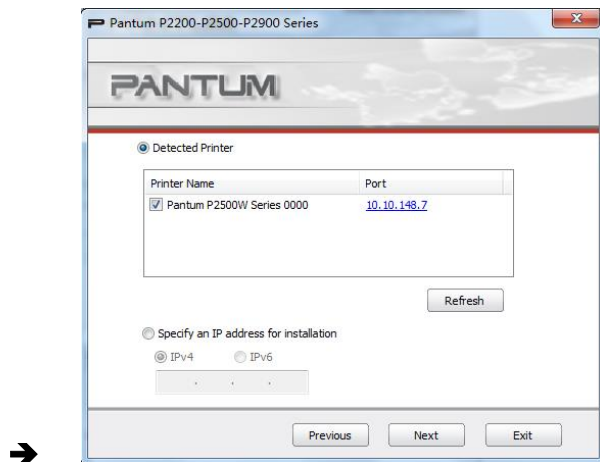
6) Connecting Successful.



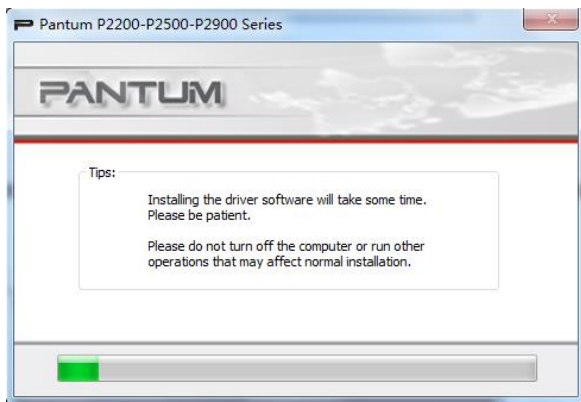
7) Setup printer WIFI.



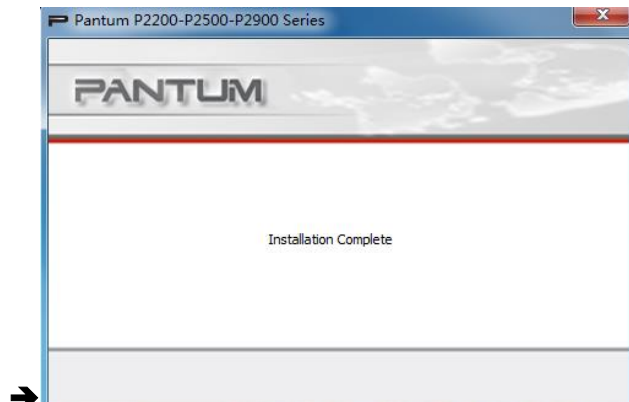
8) WIFI Setup successful.



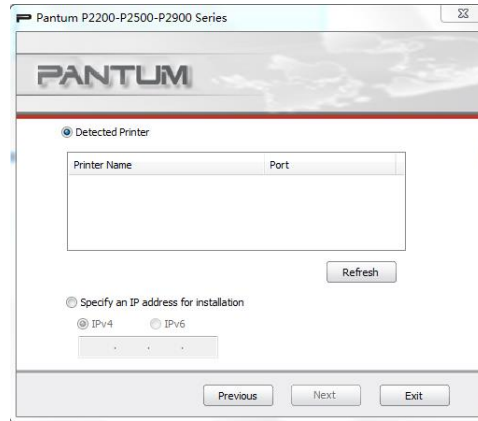
9) Installing printer driver.



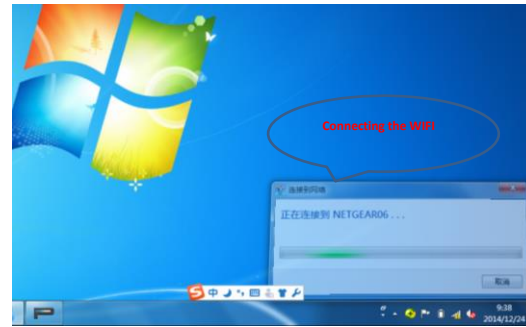
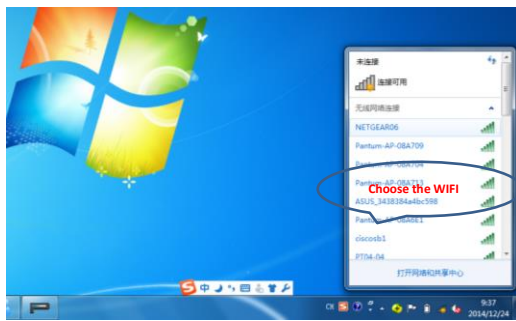
10) Installation complete.



Note : About WIFI setup is regarding printer , please make sure your PC is connecting the same WIFI router , otherwise step 6 will be failure like below :



Then it need to turn to “Previous” , and please setup your PC connect the same WIFI Router before restart the installation process . Thus it can be success .

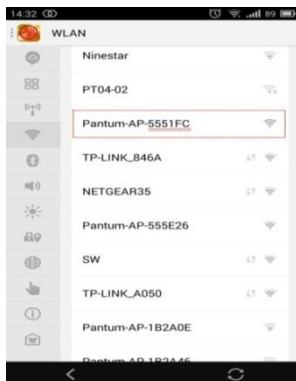


2. How do I setup a password for my WI-FI Connection?

Step1: Make sure P2502W printer is power on.

Step2: Connect to Printer AP by mobile phone or PC.

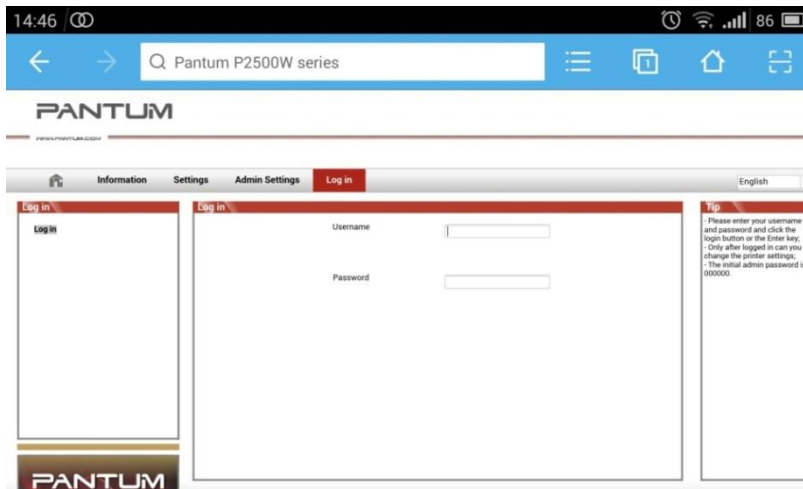
The SSID is start with” Pantum-AP”, and follow with number and character string.



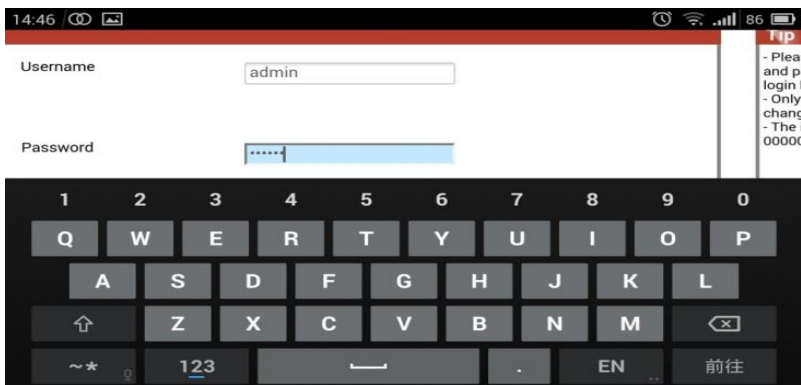
Step3: Visit the Printer Web page via browser, Printer default address is 192.168.223.1



Step4: Enter the printer web page, choose “Log in” Tap.

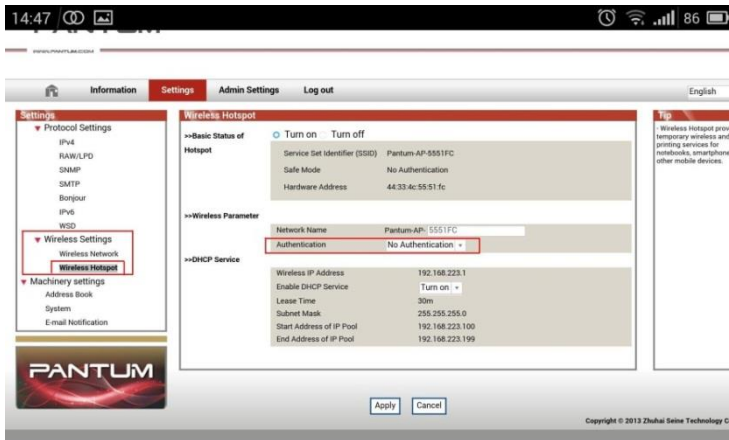


Step5: Input default user name: *admin*, Default password: *000000*. And Login.

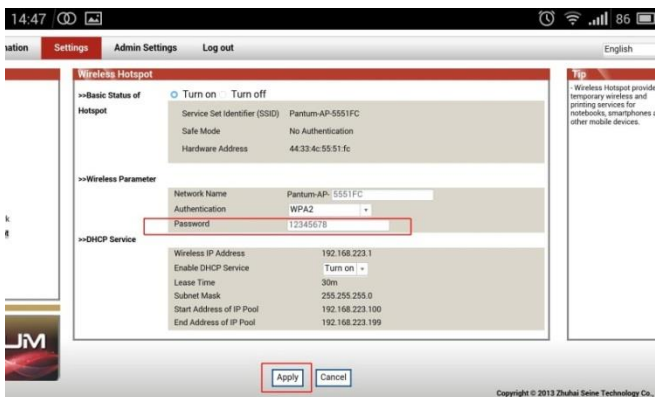
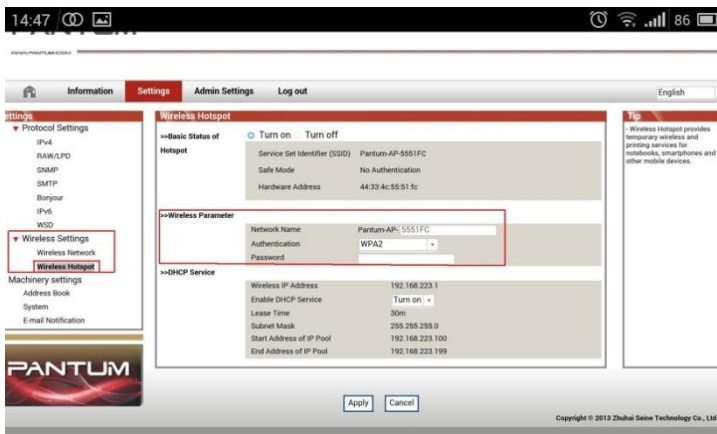


Step6: Select “settings” Tap → wireless settings → wireless Hot spot.

Then set wireless Parameter → Authentication → either WPA or WPA2.



Step7: Set the password in the tap, then click “apply”.



Step8: Disconnect equipment and printer, when reconnect them, it should input the password as step 7 setting.



Remark

Here is the way to recover factory default setting in case customer forgets the password:

- 1) Turn off the printer power switch.
- 2) Press the “cancel / continue” button until the printer turn on and enter standby mode. (It will take 5 seconds with pressing the button)



3. How do I take a mobile print out from Android?

Download APP on Android device → Switch on printer → Connect printer hot spot → Running App → setting → print.

4. How do I take a mobile print out from IOS?

IOS has print app by itself, so it just need to connect the printer and print.

Switch on printer → Connect printer hot spot → Select a file → Setup and print

5. Does my Pantum P2500W works on Windows Mobile?

No, P2500W does not support Windows Mobile.

6. How to print a PDF file from mobile phone?

About the PDF printing, it cannot print it directly. And we suggest customers who can download an app from Google store called 'Mopria'.

Step1: Download and install Mopria Print Service plugin to the mobile device from "Google Play"

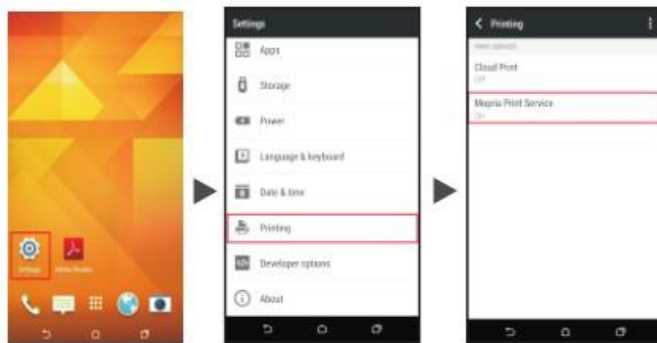
Step2: Turn on the printer



Step3: Connect to the printer hot spot




Step4: Click Settings on the main screen, choose Print, and have Mopria Print Service set to on.



Step5: Start the application



Step6: Select the document, click  on the upper right corner, and click Print.



Step7: Select the printer, click Print.



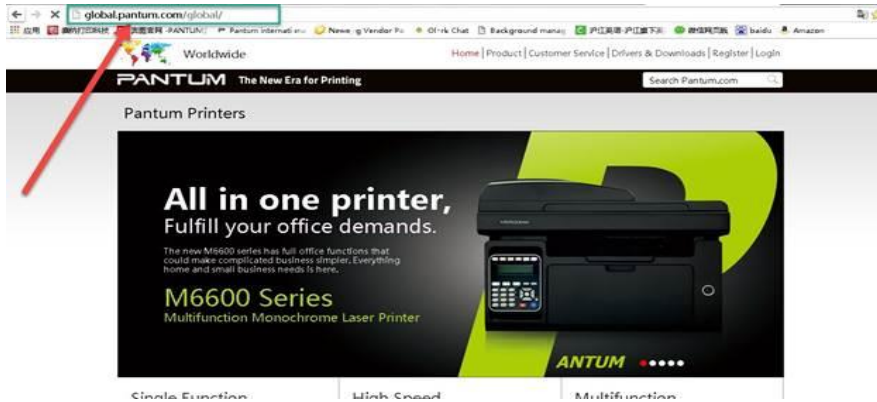
7. Where can I download the soft wares and drivers for my printer P2500W?

Here is the Download Link:

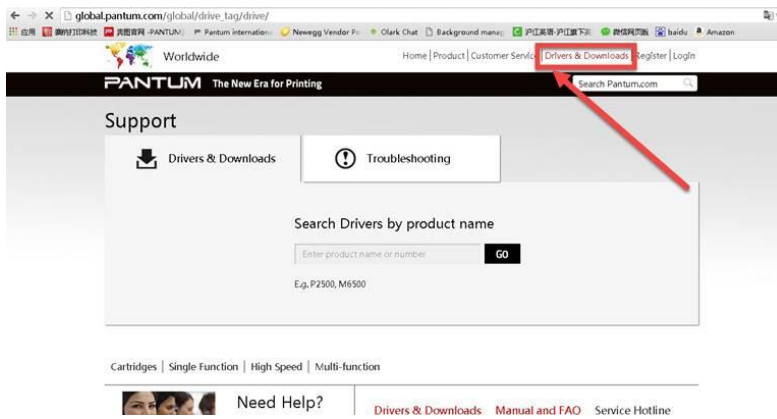
<http://global.pantum.com/global/drive/2500w/>

Step1: Please log in our website:

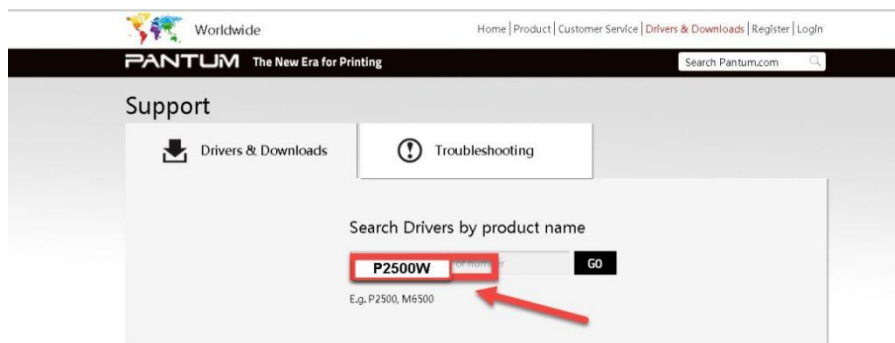
<http://global.pantum.com/global/>



Step2: Please chose “Drivers &Downloads”, the picture will be shown as below:



Step3: Please enter your model of your printer in the blank, the picture will be shown as below:



Step4: Please click the P2500W in the below picture:

Step 1 : Select Your Product



Step5: At last, please chose your system and “download “at the below of page, it will be done.



8. When I connect the printer with PC by WI-FI, Why it need more than 5 minutes from I send the order until it finally print out?

Step1: Reset the printer

- a) Turn off the printer power switch.
- b) Press the “cancel / continue” button until the printer turn on and enter standby mode. (It will take 5 seconds with pressing the button)



Step2: Re-install the driver again.

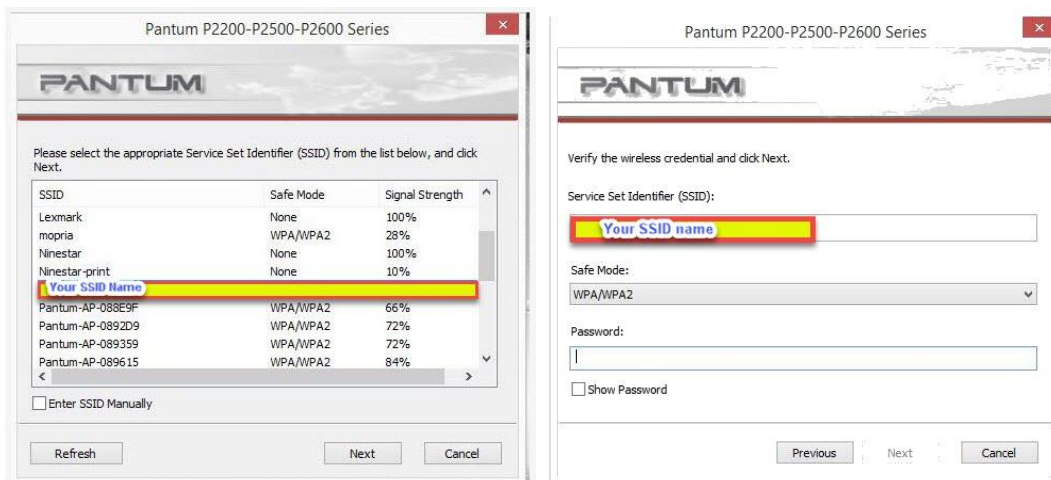
9. How to solve the wireless Connection Failed when it showed "The printer cannot connect to any wireless network with the wireless credentials provided"?

Reason1:

It is inconsistent with the network name, safe mode and password.

Solution:

It needs to enter the corresponding name, mode and password of internet. Please don't select "Enter SSID Manually" when you install the driver and select the corresponding internet SSID and safe mode. And then please enter your internet password to configure it.



Reason2:

The IP of printer and PC are not under the same router.

Solution:

Please check with your configuration page to confirm the IP address (Press the "continue/cancel" button for 4 seconds, then it can print). And please change your IP address the same with your configuration page

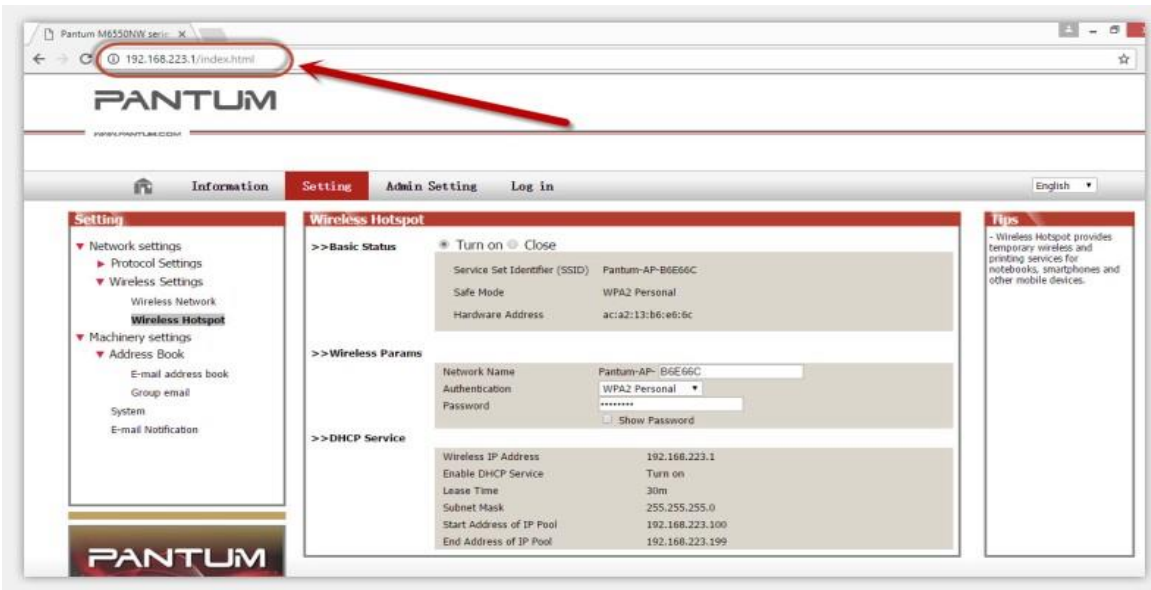
P2500W Series		PANTUM	
[WiFi Configuration Information]		[Page 3]	
Basic Information			
Wireless Status	:	On	
Communication Mode	:	Basic Connection Mode	
Network Name (SSID)	:	belkin.f6e	
BSSID	:	:	
Authentication Type	:	WPA2_PSK	
Wireless Hotspot Information			
Wireless	:	On	
SSID	:	Pantum-AP-55511A	
Hotspot IP Address	:	192.168.223.1	
Subnet Mask	:	255.255.255.0	
DHCP Service Status	:	On	
Starting Address for IP Address Pool	:	192.168.223.100	
Ending Address for IP Address Pool	:	192.168.223.199	
Lease Time	:	30m	
Primary DNS Server Address	:	192.168.223.1	
Secondary DNS Server Address	:	0.0.0.0	
Authentication Type	:	None	

10. What's the WIFI default password of printer's wireless hotspot?

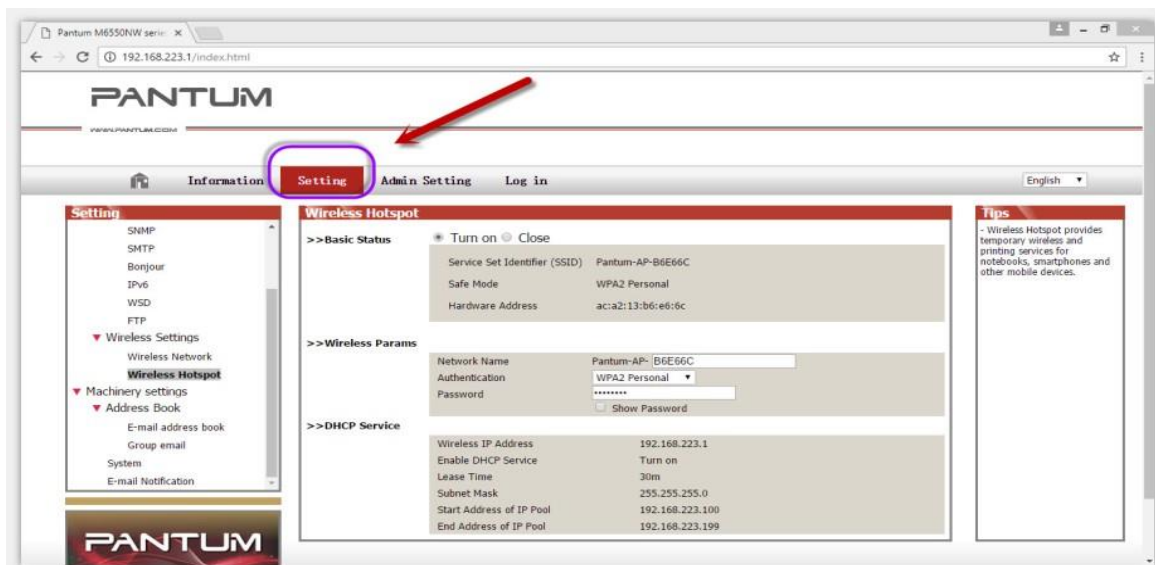
The WIFI default password is "12345678"

11. How to Close WIFI Hotspot Setting?

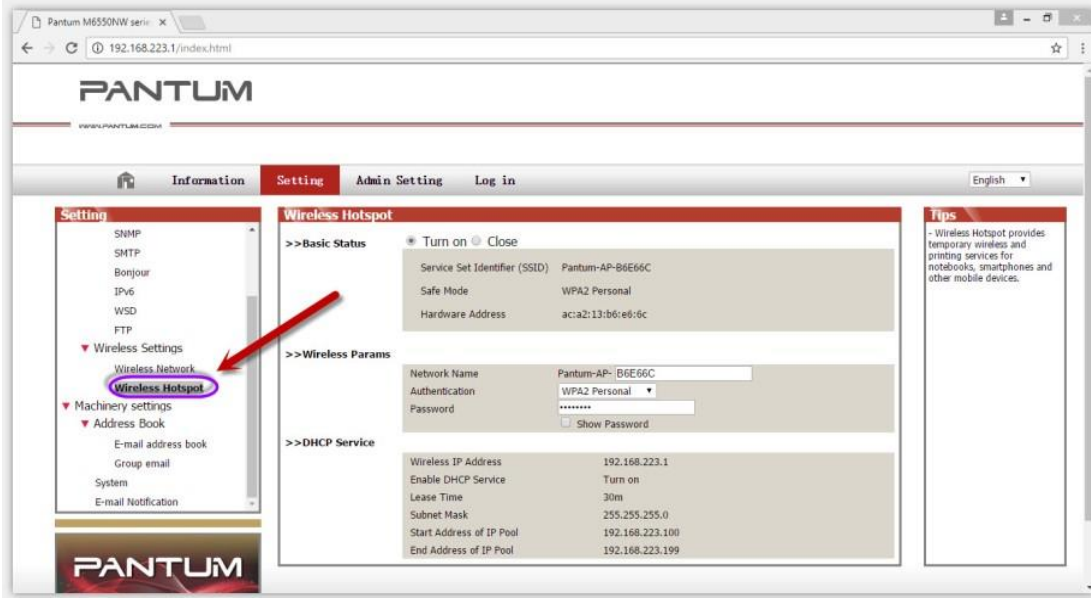
Step1: Log in the IP addresses 192.168.223.1 when your WIFI is connected to the printer.



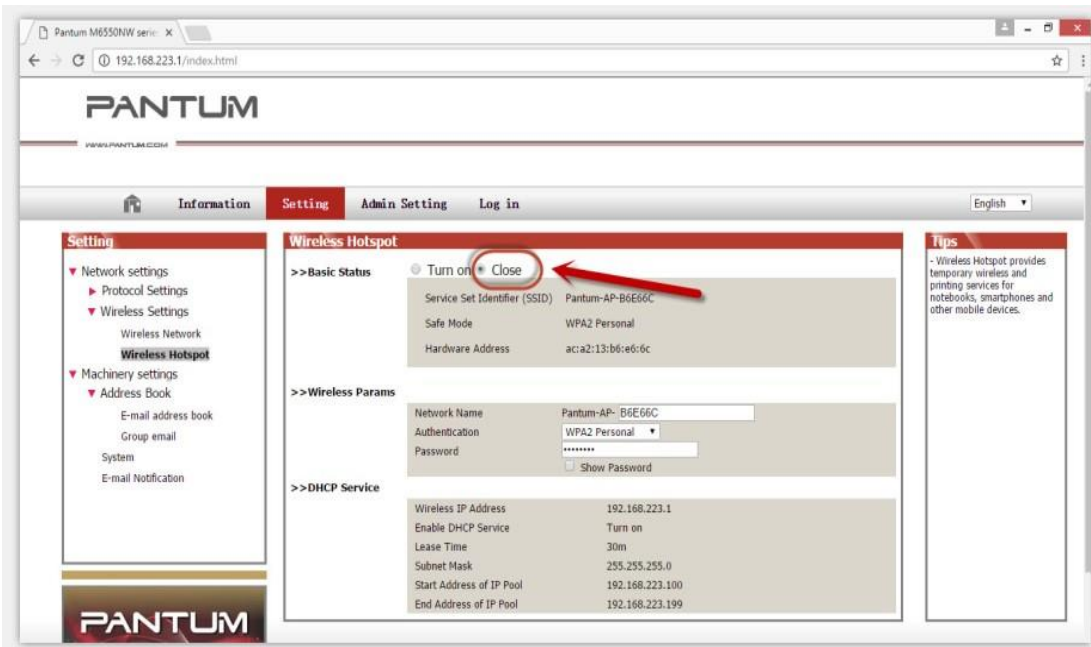
Step2: Chose "Setting" in the below picture



Step3: Chose "wireless Hotpot" at the left column.



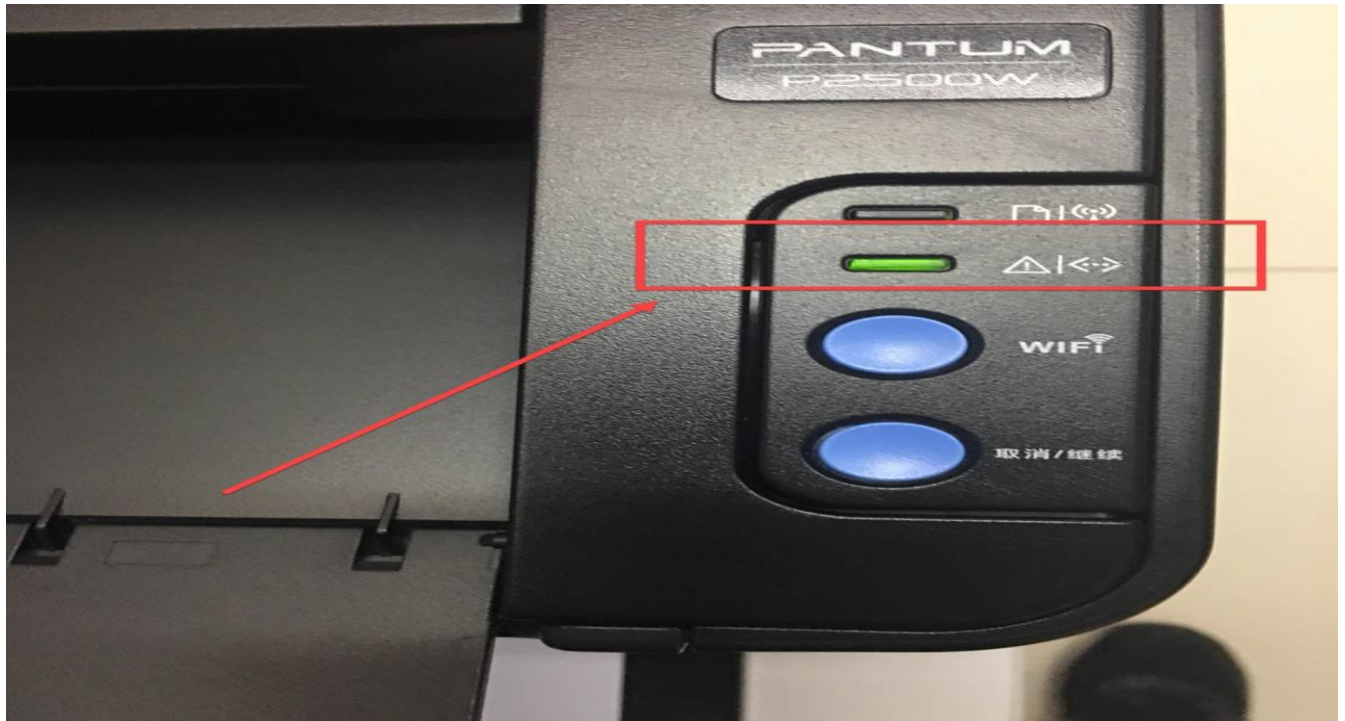
Step4: Chose "Close" to apply and it will be done.



Tips: If you want to open the WIFI function, you need to restore your printer as below steps:

a) Turn off the printer power switch.

b) Press the “cancel / continue” button and turn on the printer at the same time until the lower light is steady green. (It will take 5 seconds with pressing the button)



② Cartridge Issues:

12. How do I replace or insert a cartridge?

Pull out the seal on the new toner cartridge firstly, and then insert the toner cartridge in the printer until hearing a “click” sound.

13. How do I check the amount of toner left in my cartridge?

Press “continue /cancel” button on interface for 3 seconds to print out configuration page, and there is the information.

P2500W Series		PANTUM
[Printer Information Page]		[Page 1]
Printer Information		
Product Name	:	Pantum P3100DL
USB Vendor ID	:	232B
Firmware Version	:	1.0.1.7
Memory Size	:	128MB
Printing Mode	:	GDI
Product Serial No.	:	AA2A000000
Cartridge Information		
Cartridge Model	:	PD-210
Remaining Amount of toner	:	0%
Actual Pages Printed	:	0
Average Coverage	:	0%
Expected Pages Printed	:	0
Print Information		
Total Pages Printed	:	564
Pages Printed With Different Paper Types		
A5	:	1
A4/LETTER	:	512
Legal/Folio	:	1
B5/Executive	:	1
Others	:	49

14. How do I check how many pages I have printed so far?

Press “continue /cancel” button on interface for 3 seconds to print out configuration page, and there is the information.

P2500W Series		PANTUM
[Printer Information Page]		[Page 1]
Printer Information		
Product Name	:	Pantum P3100DL
USB Vendor ID	:	:232B
Firmware Version	:	:1.0.1.7
Memory Size	:	:128MB
Printing Mode	:	:GDI
Product Serial No.	:	:AA2A000000
Cartridge Information		
Cartridge Model	:	:PD-210
Remaining Amount of toner	:	:0%
Actual Pages Printed	:	:0
Average Coverage	:	:0%
Expected Pages Printed	:	:0
Print Information		
Total Pages Printed	:	:564
Pages Printed With Different Paper Types		
A5	:	:1
A4/LETTER	:	:512
Legal/Folio	:	:1
B5/Executive	:	:1
Others	:	:49

15. What are the cartridge models for P2500 series printer?

1600 standard Page Yield: PA/PB/PC-210/211 (“A, B, C “models depend on countries)

1000 standard Page Yield: PA/PB/PC-210S (“A, B, C “models depend on countries)

16. Why the second LED shows orange when I insert a new cartridge?

Step1: Check the cartridge whether you pull out the seal on it;

Step2: Take out of the cartridge from the printer, use a clean dry cloth to wipe cartridge chip softly;

Step3: Insert the toner cartridge in the printer until hearing a “click” sound.

17. How about the standard page yield of toner PA/PB/PC-210?

The Toner PA/PB/PC-210 page yield is 1600 pages, that is according ISO 19752 standard measure by print 5% coverage document. So when the printer coverage is higher, the page can print should be less.

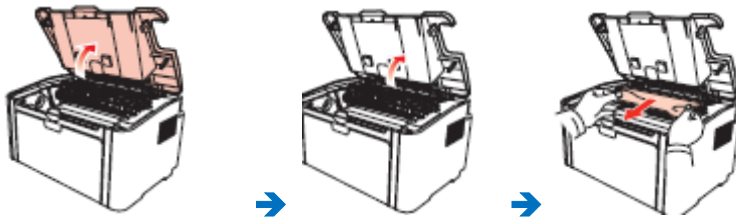
③ Papers Issues:

18. How can I clear any paper jam?

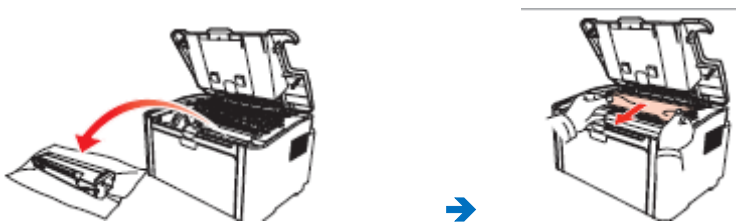
Step1: Paper Jam in the Feed Port, Gently pull the jammed paper straight out.



Step2: Paper Jam around fuser unit the Printer, Open the upper fuser guide to decrease the pressure of compression spring, Pull the jammed paper out of the fuser unit.



Step3: Paper jam inside the printer. Remove the laser toner cartridge along the guides, slowly pull the jammed paper out along the paper output orientation, and then insert the laser toner cartridge into the printer.



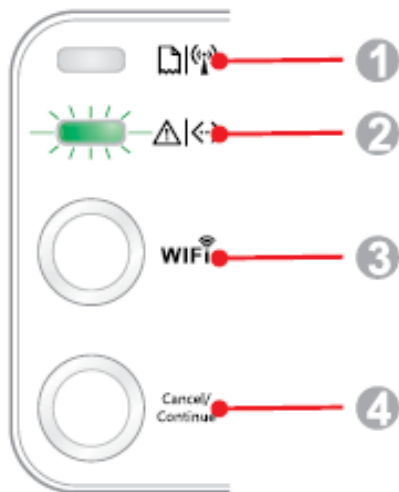
19. Print jobs stuck in paper curve. What should I do?

Fetch the papers from output bin, and keep the paper is just unpack from the package not be too wet or get static electricity, too avoid or decline paper curve.

20. What does the Blinking Lights notifications mean?

1, the first LED is indicating paper and WIFI status, the second LED is indicate printer and toner cartridge status;

2, Green light means normal, Red light means error, orange (just the second LED has) mean toner low or empty.



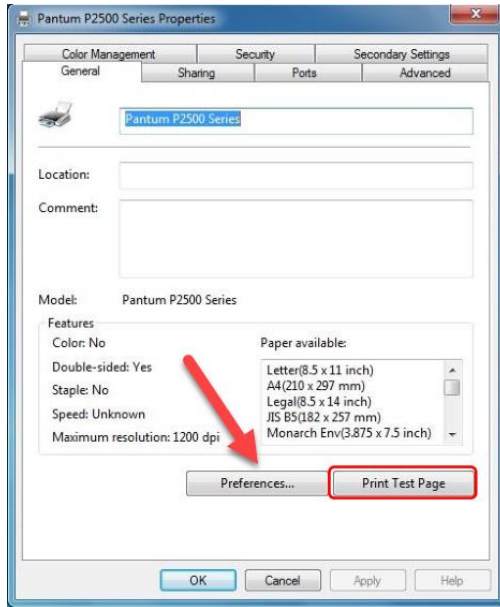
Serial No.	Name
1	Multi-colored LED1 indicator
2	Multi-colored LED2 indicator
3	Wi-Fi search button
4	Cancel/Continue button

21. How to cancel the “duplex printing” on Windows?

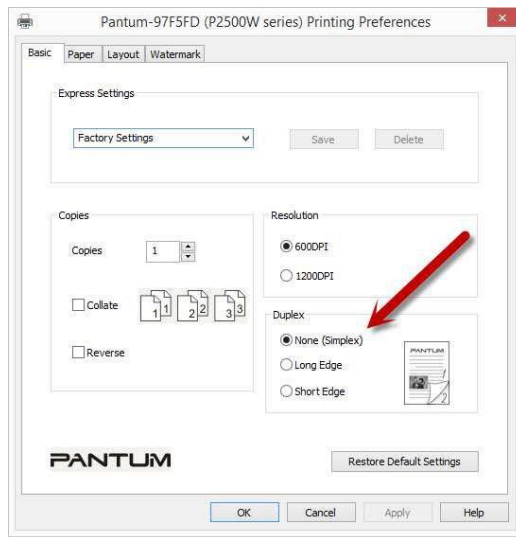
Please change your printer’s properties as below steps.

Step1: Please chose the model of your printer in “device and printer”

Step2: Double left click the printer-printer’s properties –preferences



Step3: Please choose 'NONE" in duplex printing.



22. How to check the toner's serial number location:

Please check with below pictures:



23. How to check the printer's serial number location:

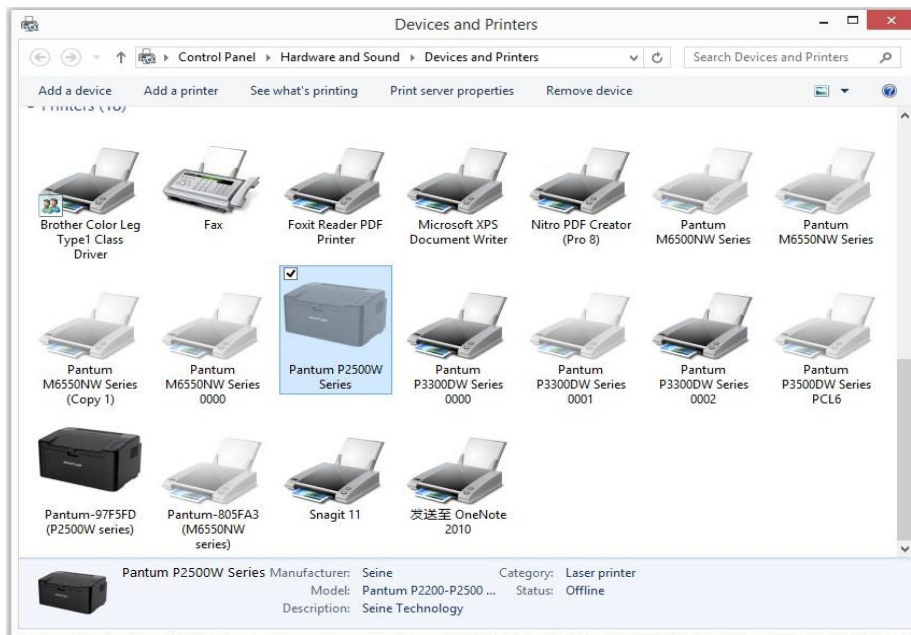
Please check with below pictures



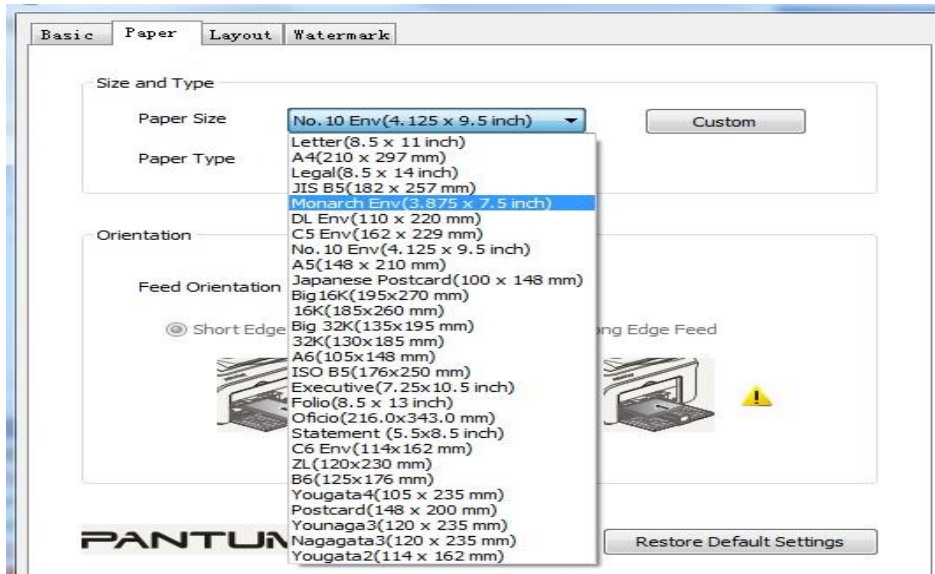
24. How to adjust letter format in the printing document?

Step1: Please check the paper size in the printer's property if it is the 'letter size', please follow up with below steps to check :

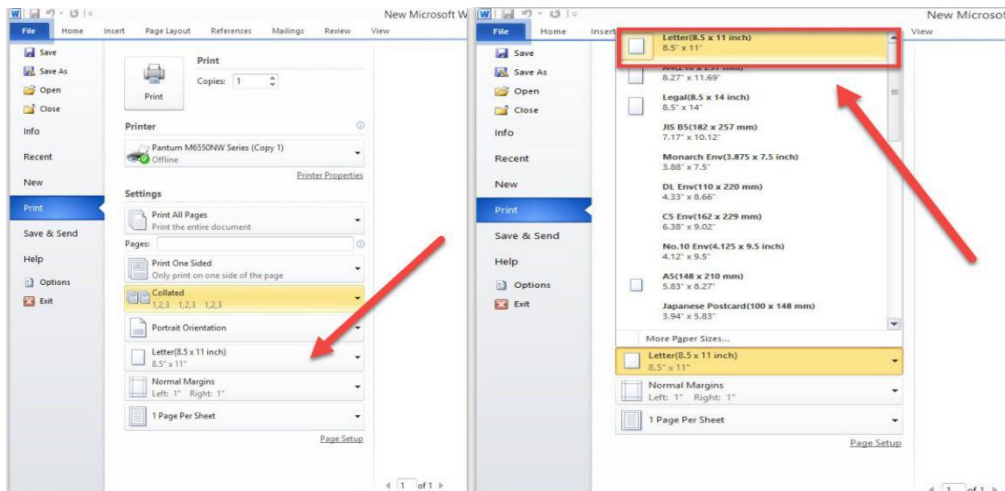
Please double click your model of your printer in the 'Devices and Printers'









Please change the it to " Letter(8.5x11 inch) in the printing preferences











Step2: Please change to 'letter size' In the printing document also.

























LED1 Status Indication

Serial No.	Paper/Wi-Fi Multi-colored LED1 Status Indication	Status Description (For printers with USB+Wi-Fi interface)	Status Description (For printers with USB interface)
1		No Wi-Fi connection, no paper error, sleep mode LED1 off	No WiFi connection, no paper error, sleep mode LED1 off
2		Searching Wi-Fi, no indication of paper error LED1 with green light flashing slowly	N/A
3		Connecting Wi-Fi..., no indication of paper error LED1 with green light flashing quickly	N/A
4		Successful Wi-Fi connection, no paper error LED1 with green light staying on	N/A
5		Paper Jam Error LED1 with red light staying on	Paper Jam Error LED1 with red light staying on
6		Paper shortage in printing, or failed in feeding LED1 with red light flashing quickly	Paper shortage in printing, or failed in feeding LED1 with red light flashing quickly

LED2 Status Indication

Serial No.	Data/Cartridge Multi-colored LED2 Status Indication	Status Description (For printers with USB+ Wi-Fi interface and the ones with USB interface only)
1		Starting and warming up the printer, waking up and warming up the printer, and warming up the printer by opening and closing its cover. LED2 with green light flashing slowly
2		The printer is ready LED2 with green light staying on
3		Sleep LED2 with green light on and flashing slowly
4		Printing Multi-colored LED2 with green light flashing quickly
5		Alarming for toner low LED2 with orange light on and flashing quickly
6		Cartridge error (not installed, mismatch, expired) LED2 with orange light staying on
7		Serious printer error (heating roller abnormalities, laser motor abnormalities, communication error, opened cover, etc.) LED2 with red light staying on
8		A job is cancelled via the panel LED2 with light flashing quickly

Indication of LED1 and LED2 Combination Status

Serial No.	Status		Status Description
	Paper/Wi-Fi (Multi-colored LED1)	Data/Cartridge (Multi-colored LED2)	
1			Paper jam, the printer is ready LED1 with red light staying on, LED2 off
2			Paper jam during printing LED1 with red light staying on, multi-colored LED2 off
3			Paper jam, alarming for toner low LED1 with red light staying on, LED2 off
4			Paper jam, cartridge error (not installed, mismatch, expired) LED1 with red light staying on, LED2 off
5			Paper jam, serious printer error (heating roller abnormalities, laser motor abnormalities, communication error, opened cover, etc.) LED1 off, LED2 with red light staying on
6			Paper jam, a job is cancelled via the panel LED1 off, LED2 with green light flashing quickly
7			Paper shortage in printing, or failed in feeding, only showing paper errors LED1 with red light flashing quickly, LED2 off
8			Paper shortage in printing, or failed in feeding, alarming for toner low LED1 with red light flashing quickly, LED2 off
9			Paper shortage in printing, or failed in feeding, cartridge error (not installed, mismatch, expired) LED1 off, LED2 with orange light staying on
10			Paper shortage in printing, or failed in feeding, and meanwhile, serious printer error (heat roller abnormalities, laser motor abnormalities, communication error, opened cover, etc.) LED1 off, LED2 with red light staying on
11			A job is being cancelled via the panel because of paper shortage in printing or failure in feeding LED1 with green light off, LED2 with green light flashing quickly

25. What is my Printer Specifications?

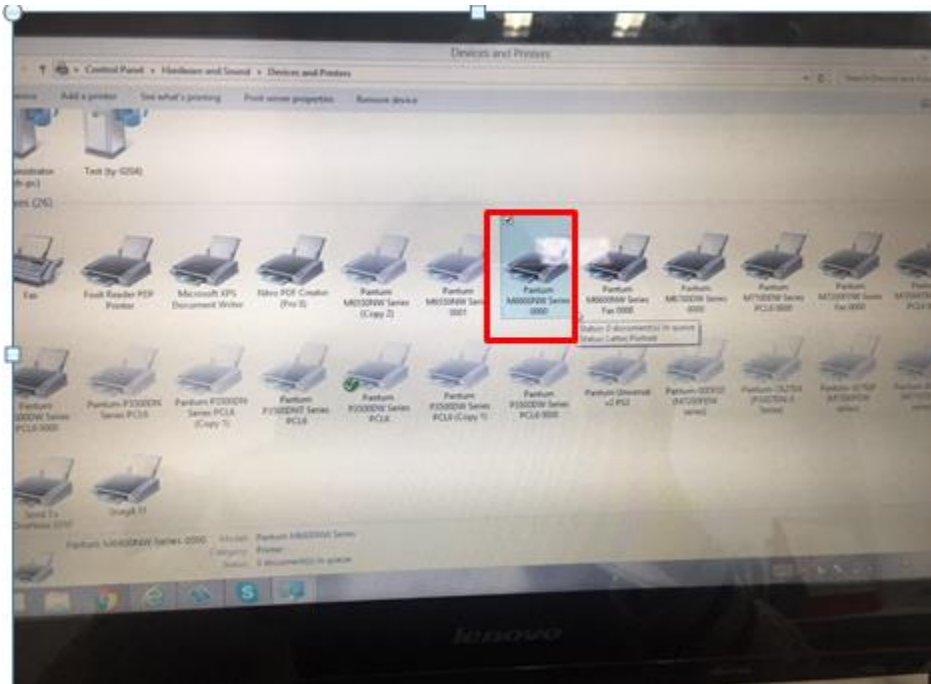
Function	Print only
Print specifications	
Print technology	Electrophotographic laser monochrome
Print speed	22 ppm (A4) / 23 ppm (Letter)
Print resolution	Max. 1,200×1,200
First print out time	Less than 7.8s
Printer language	GDI
Processor speed	600MHz
Memory	128MB
Duplex capability	Manual
Monthly duty cycle	15,000 pages
Recommended monthly page volume	700 pages
Paper handling	
Paper input capacity	150pages(standard paper 80g/m ² (20lb bond))
Paper output capacity	100pages(standard paper 80g/m ² (20lb bond))
Media types	Plain, Thick, Transparency, Cardstock, Label, Envelope, Thin
Media sizes	A4, A5, A6, JIS B5, ISO B5, B6, Letter, Legal, Executive, Statement, Monarch envelope, DL envelope, C5 envelope, C6 envelope, NO.10 envelope, Japanese postcard, Folio, Oficio, Big 16k, 32k, 16k, Big 32k, ZL, Yougata4, Postcard, Younaga3, Nagagata3, Yougata2
Media weight	60~163g/m ²
Paper handling manual feed slot	
Media type	Plain, Preprinted, Recycled, Transparency, Card stock, Label, Envelope, Kraft paper
Media size	75mm×148mm to 216mm×356mm
Media weight	3"×5.8" to 8.6"×14.2"
Paper input capacity	1 Page
General	
Acoustic	Printing: 52dB Standby: 30dB
Operating humidity range	20% - 80%
Power models	110V Model: AC100~127V (±10%); 50Hz/60Hz; 6A 220V Model: AC220~240V (-15%, +10%), 50Hz/60Hz; 3A
Operating temperature range	10-32°C (50°F-90°F)
Power consumption	Printing: Average 350W Ready: 38W Sleep Mode: Less than 6 W
Weight (w/o cartridges)	4kg (8.82lbs) / 4.75kg (10.47lbs)
Dimensions (W×D×H)	337 x 220 x 178 mm (13.27 x 8.66 x 7.01 inch)
Operating systems compatibility	Microsoft Windows Server 2003/2008/2012/XP/Vista/Win7/Win8/Win8.1 (32/64 Bit) Mac OS 10.6/10.7/10.8/10.9 Linux
Supplies	
Toner Cartridge	P*-210 Series Standard capacity (1,600 pages)
What's in the box ?	
What's in the box ?	Printer x 1 / 700 page starter cartridge x 1 / USB interface cable x 1 / Power cord x 1 / CD-ROM x 1 / Quick setup guide x 1

26. What kinds of paper can I use in my Pantum P2500W?

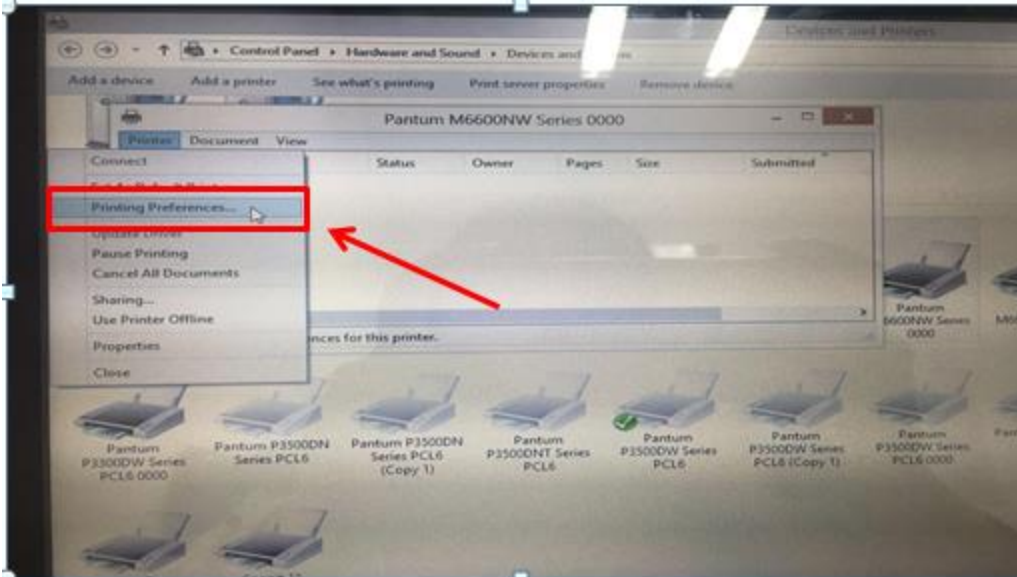
Paper handling	
Paper input capacity	150pages(standard paper 80g/m ² (20lb bond))
Paper output capacity	100pages(standard paper 80g/m ² (20lb bond))
Media types	Plain, Thick, Transparency, Cardstock, Label, Envelope, Thin
Media sizes	A4, A5, A6, JIS B5, ISO B5, B6, Letter, Legal, Executive, Statement, Monarch envelope, DL envelope, C5 envelope, C6 envelope, NO.10 envelope, Japanese postcard, Folio, Oficio, Big 16k, 32k, 16k, Big 32k, ZL, Yougata4, Postcard, Younaga3, Nagagata3, Yougata2
Media weight	60~163g/m ²
Paper handling manual feed slot	
Media type	Plain, Preprinted, Recycled, Transparency, Card stock, Label, Envelope, Kraft paper
Media size	75mm×148mm to 216mm×356mm
Media weight	3"×5.8" to 8.6"×14.2"
Paper input capacity	1 Page

27. How to print multipage on one page ?

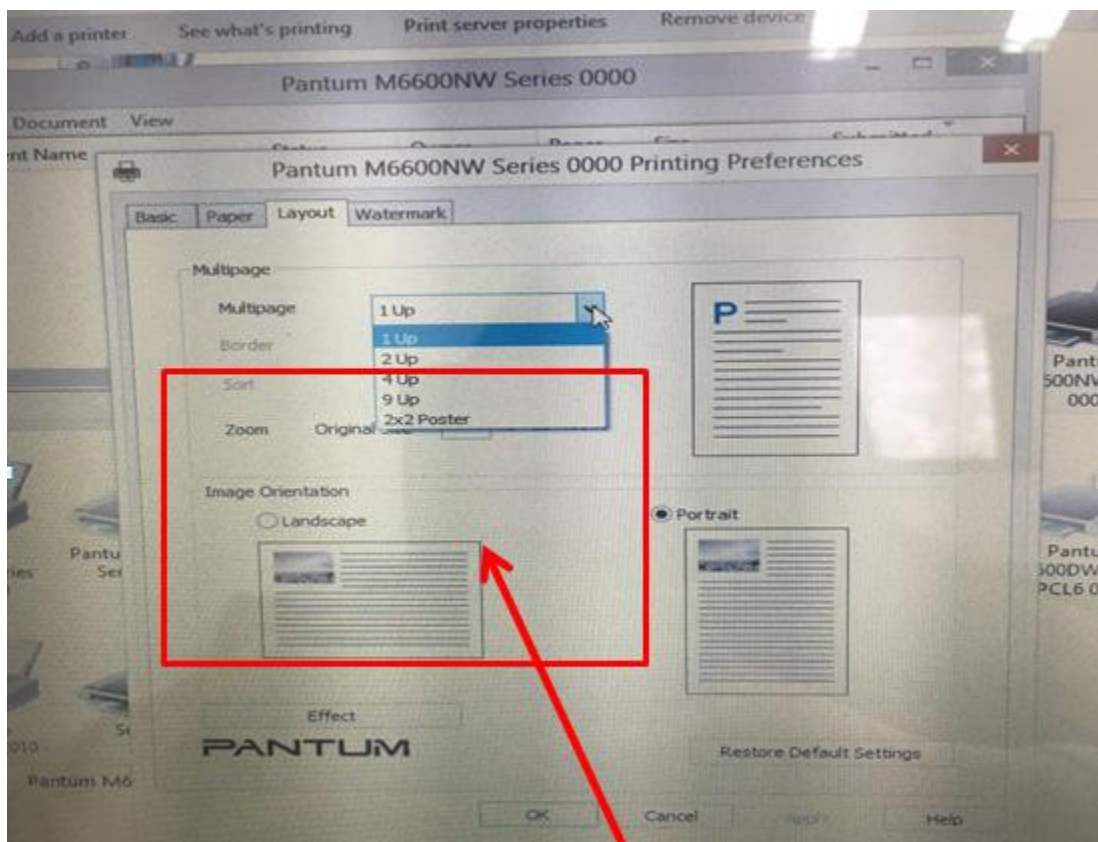
Step1: Please double left click your model of your printer in the 'Devices and Printers'



Step2: Select "printing preferences" after double left click your printer.



Step3: Select “how many pages you want to print in one page” in the Layout.

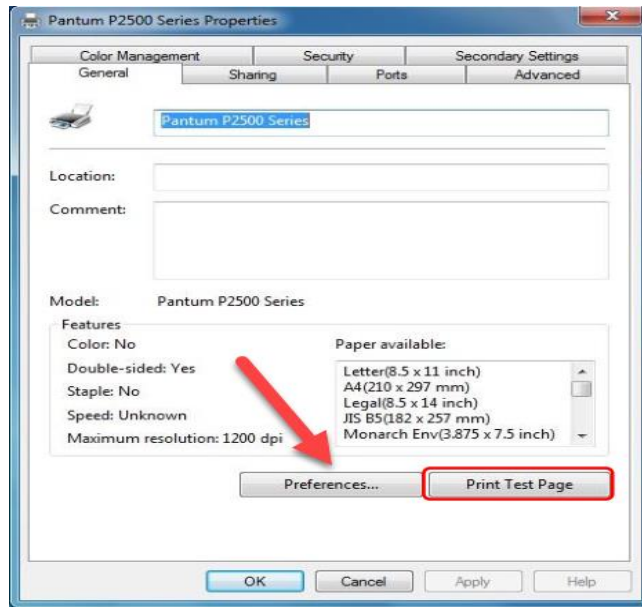


28.How to do Duplex Printing on Windows system?

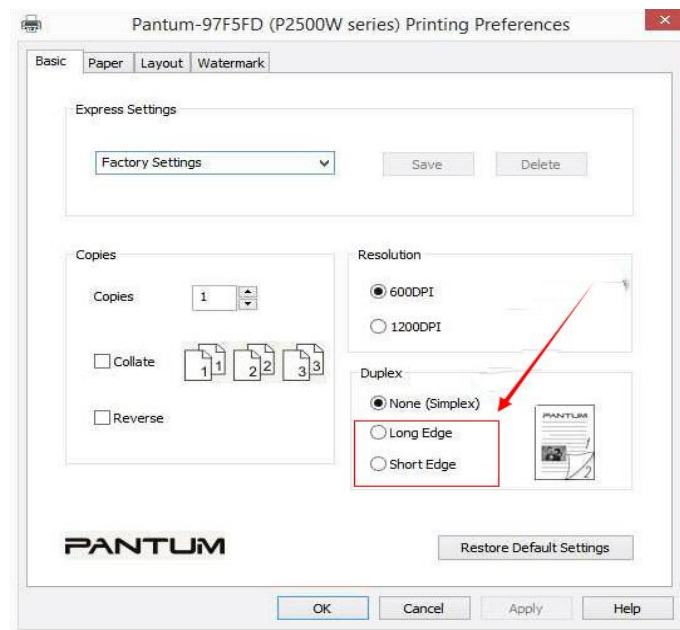
Please change your printer's properties as below steps.

Step1: Please chose the model of your printer in “device and printer”

Step2: Double left click the printer-printer's properties –preferences



Step3: Please choose ‘Long Edge ’ or ‘Short Edge’ in duplex printing.



④ Printer Compatible Versions:

29. Is my printer mac compatible? What are the versions that it is compatible with?

Yes, Mac 10.6/10.7/10.8/10.9/10.10/10.11/10.12/10.13

30. Is my printer Linux compatible? What are the versions that it is compatible with?

Yes, Ubuntu 12.04/ 14.04/ 16.04/ 18.04

31. Is my printer Windows compatible? What are the versions that it is compatible with?

Yes, Microsoft Windows server 2003/Server 2008/Server 2012/XP/Vista/Win7/Win8 (32bit/64bit)/Win8.1(32bit/64bit)/Win 10(32bit/64bit)

32. Could I download the APP from Google Play?

Yes, you could download it from Google Play.

33. Is my printer compatible with Chrome OS system?

No, our printer did not compatible with Chorme OS.

34. Is my printer compatible with Linux OpenSuse system?

No, our printer did not compatible with Linux OpenSuse.

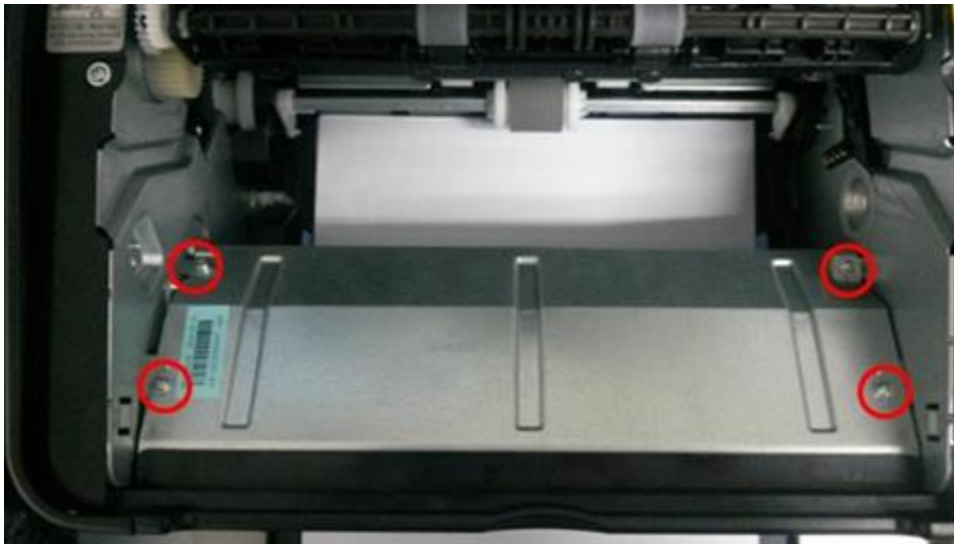
35. Is my printer compatible with Linux Debian 9 system?

No, our printer did not compatible with Linux Debian 9.

⑤ Normal Printer Issues:

36. Why the printer could not print the horizontal line in the page when printed out?

Step1: Open the protecting cover of the LSU using the screwdriver.



Step2: Pull out the cable and reinsert it again.(The connecting of the LSU's cable and outlet has something wrong ,so the transmitted signal is abnormal.)



37. Why the printer could not feed paper successfully?

There are three possible reasons as below:

1) There is too much paper in the tray:

Solution: Remove excess paper from the tray.

2) The print media is loaded incorrectly:

Solution: Please correctly load the print media.

3) The print media is beyond the usage specification range.

Solution: Please use the print media within the specification range.

38. Why it will be smoked when printing?

The smoking is water vapor, which is caused by the printing environment and paper status. When we do the printing, the fuser unit will heat the paper to around 180 °C, so during paper out of the printer, it would exchange its temperature with surrounding environment.

1, Print environment: when the temperature becomes much lower, the humidity will be much higher, so the vapor will get heavy. Due to the temperature difference and moist , the water vapor will produce accordingly. Usually, we suggest the printing temperature is 10-32°C, Humidity (RH) is 20%-80%, and it will work fine.

2, Paper status: the paper status when dry or moist will also influence strongly the printing vapor. When the paper is just unpacked to print , or just laid in the dry environment , there would be no or less vapor ; But when the paper is very moist , for example , it was exposed in 90% RH environment for a day , when printing , there will be more vapor coming out .

So, that is the cause of printing vapor, we must take care of the printing environment and the paper to avoid it.

39. What is the power requirement will be need?

See the nameplate on the back of the printer to learn the appropriate power supply and voltage to use with this printer. Please strictly follow the product specifications on power type.

40. How to change the printing port is available when it showed” Printing port is on used”?

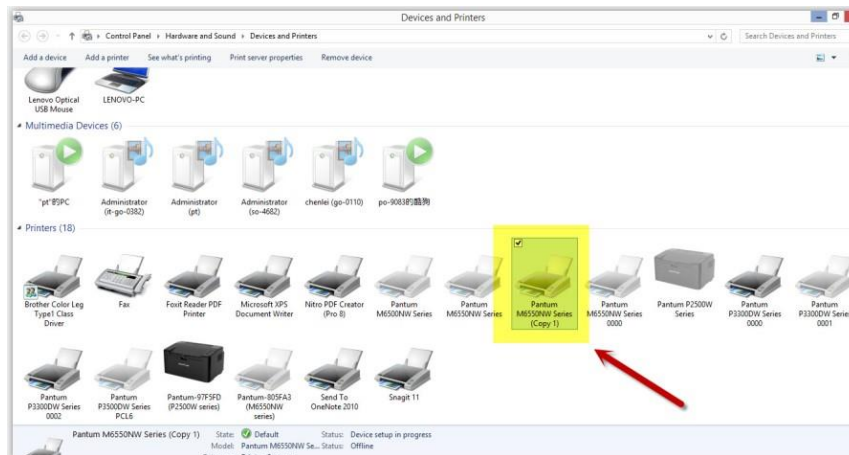
"Printer cannot be configured because printing port is on used." it may cause by PC port is abnormal.

We suggest that you can check with below steps:

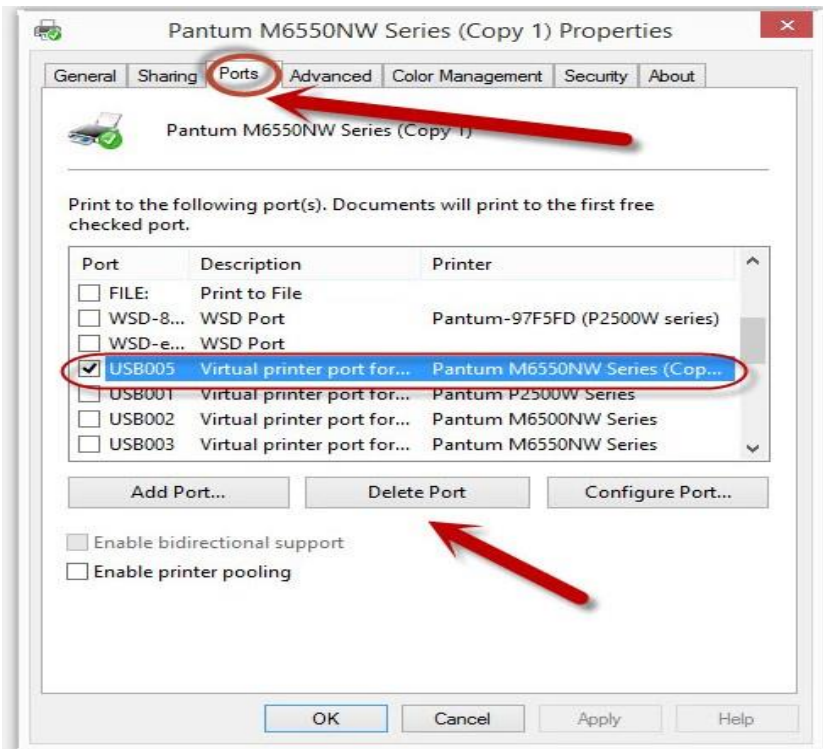
Step1: Change to another PC port then reconnects to the printer and reinstall the driver.

Step2: Click PC table “start”-“Devices and Printers”, delete the useless printer copy manually (the mouse right click on the useless printer name, and then delete it).

Then reconnect to the printer and re-install the driver.



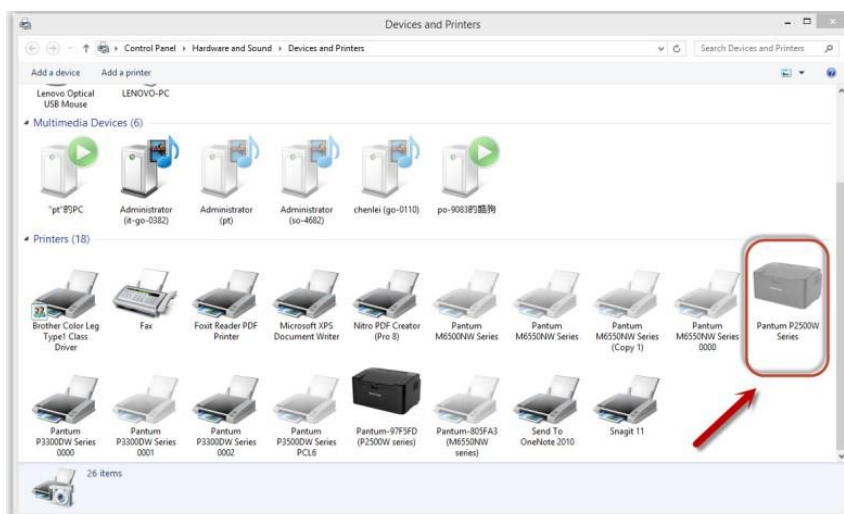
Step3: Click PC table “start”-“printer and fax”, chose any of the printer copy, the mouse right click on the “printer property”-“port”, then chose the customer no need the printer copy port of all the printers, and click “delete port”-“confirm”. At last reconnect to the printer and re-install the driver.



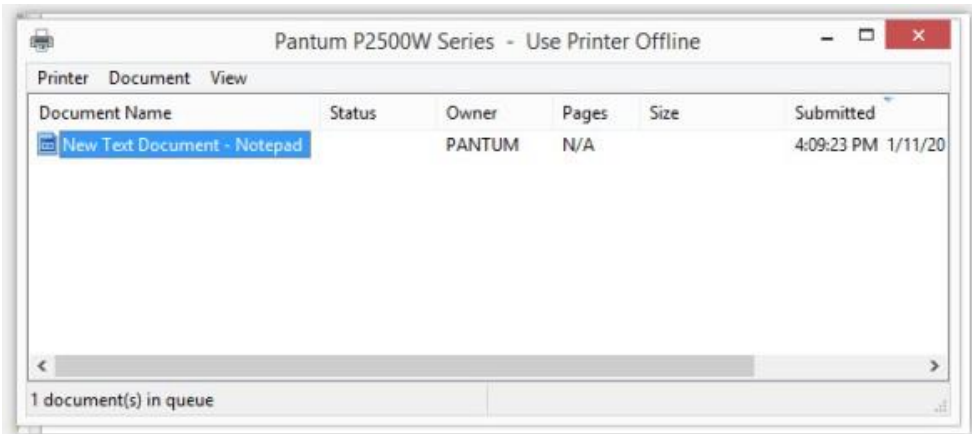
41. How to cancel a printing job in the queue?

Regarding the issue about your printer, please kindly check with below steps, you need to end the printing job in the printing queue:

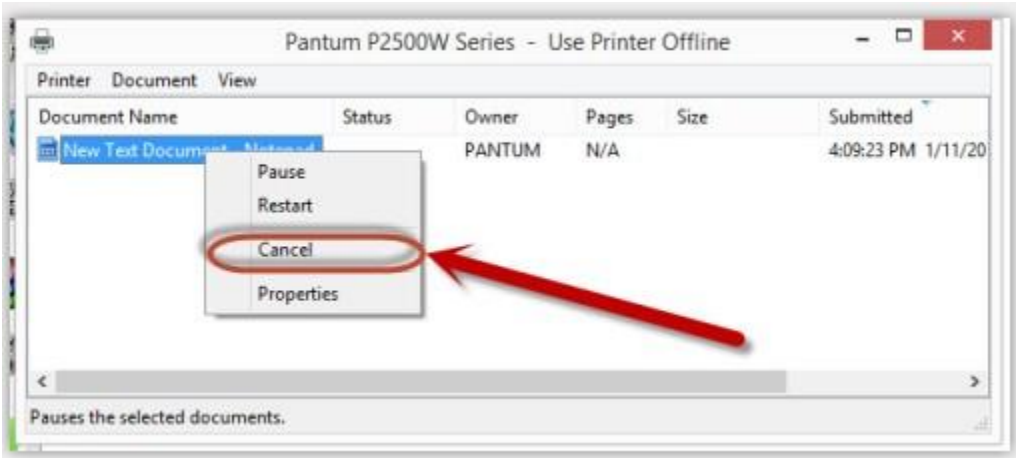
Step1: Please double click your model of your printer in the 'printer and device", the picture will be shown as below:



Step2: Please right click the printing task that you want to stop. It will be shown as below:

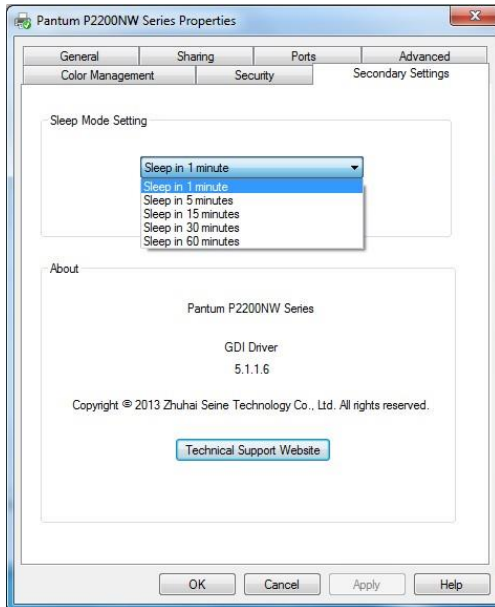


Step3: Please chose “cancel”, it will stop printing job.



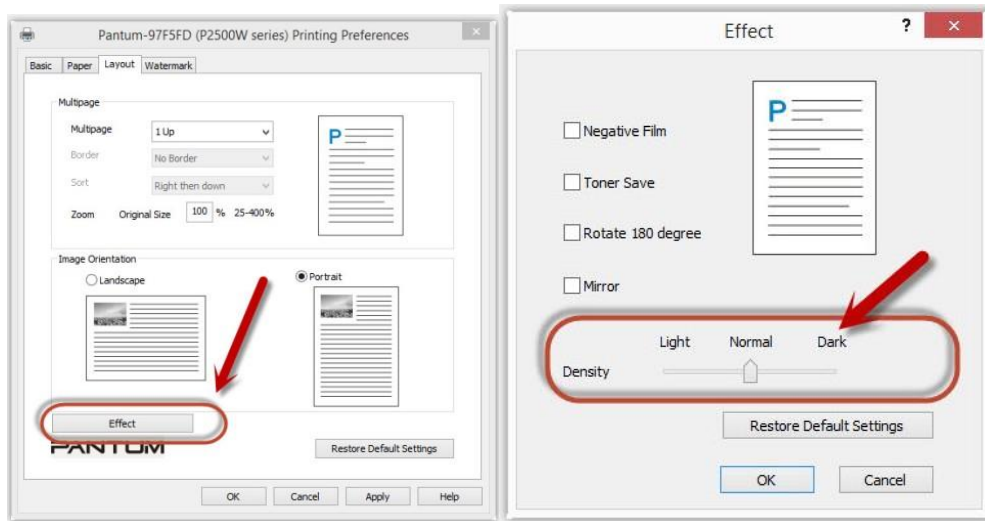
42. Is it possible to close the 'Auto sleeping time'?

No, we can change the sleeping mode from 1min to 60 minus. But we cannot close it completely. Please check with below picture:



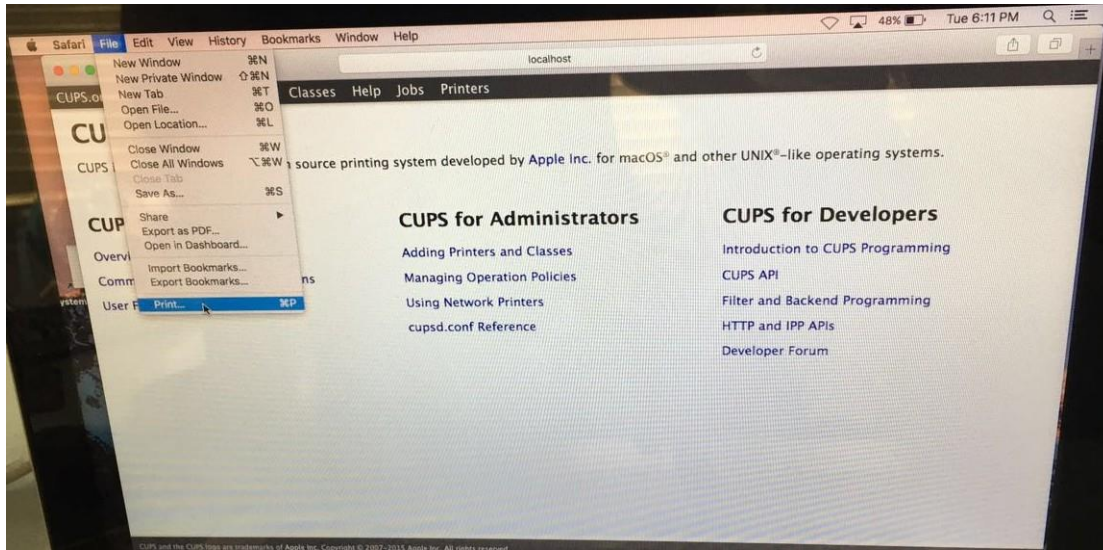
43. How to get the printer to print darker under Windows?

It will be changed in the printer's proprieties-----“Layout”-----“Effect”--“Dark”

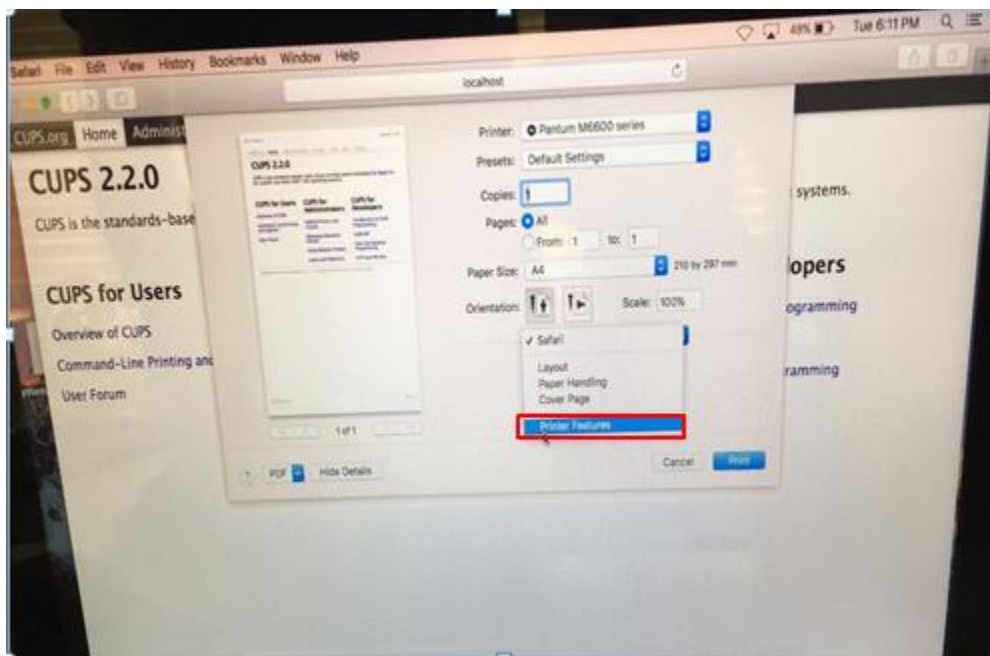


44. How to get the printer to print darker under Mac?

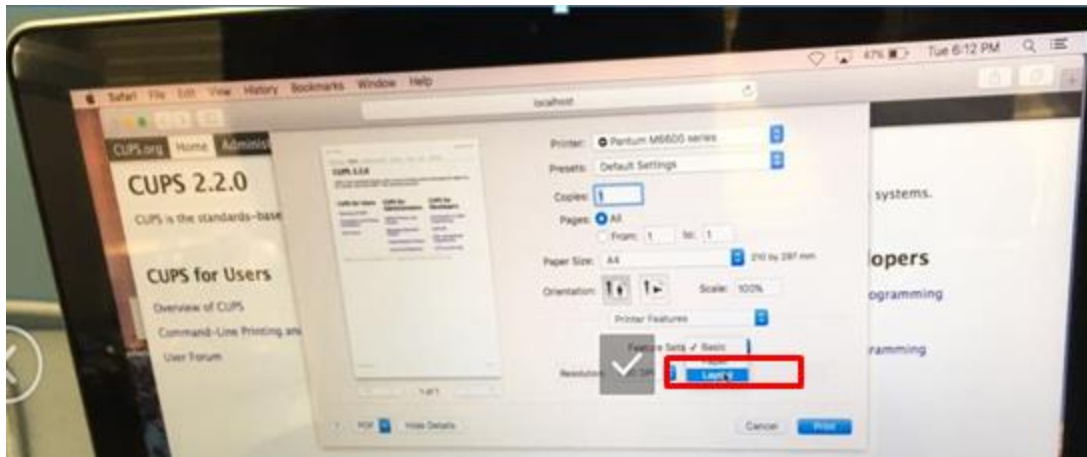
Step1: Click "Print" of the “file”



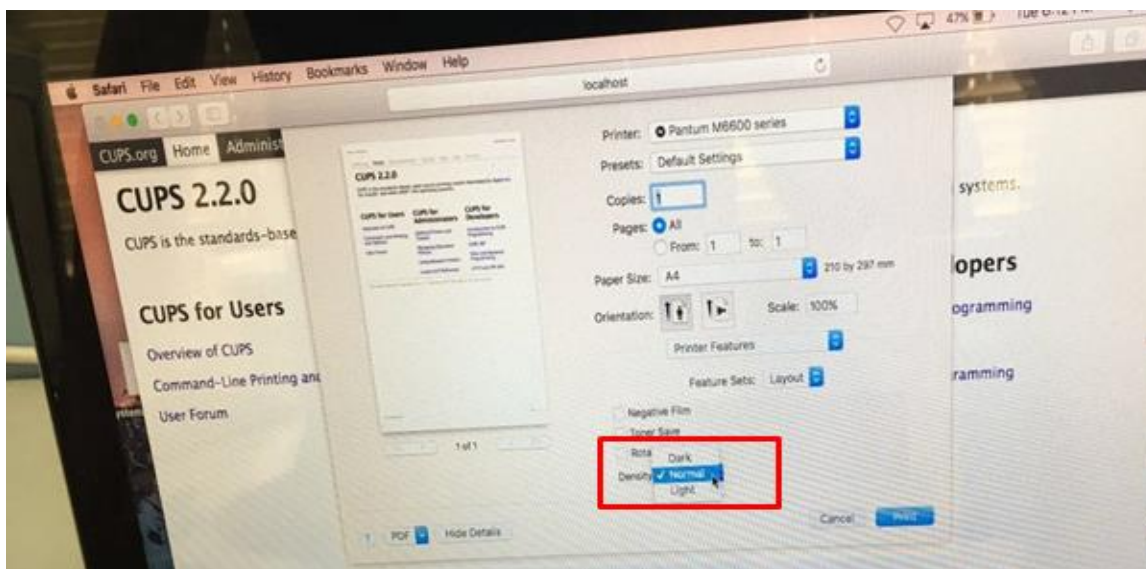
Step2: Click the “Printer Features” as shown below.



Step3: Chose “layout” in the “Printer Features”

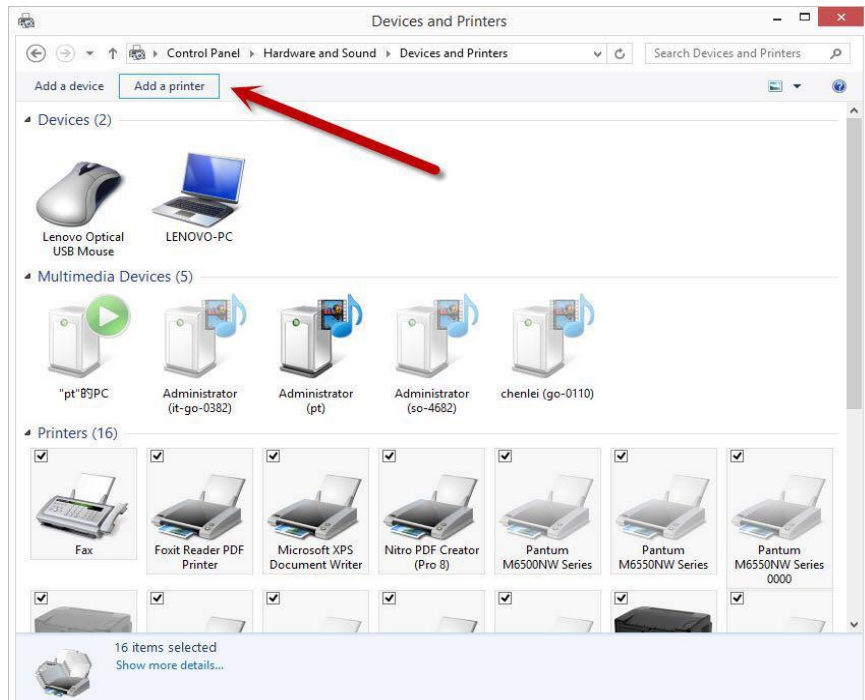


Step4: Select from “Light-Normal- Dark” per your request

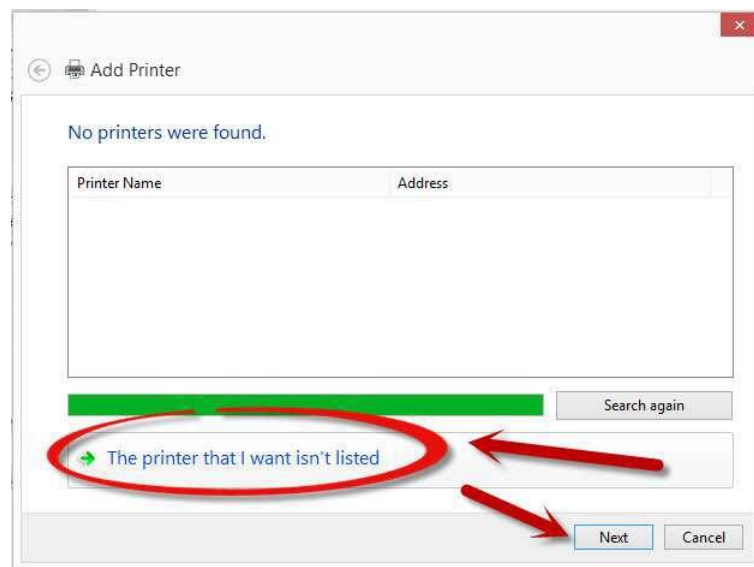


45. How to “add a printer “by manually under Windows?”

Step1: Click “add a printer” in the ‘Devices and Printers’

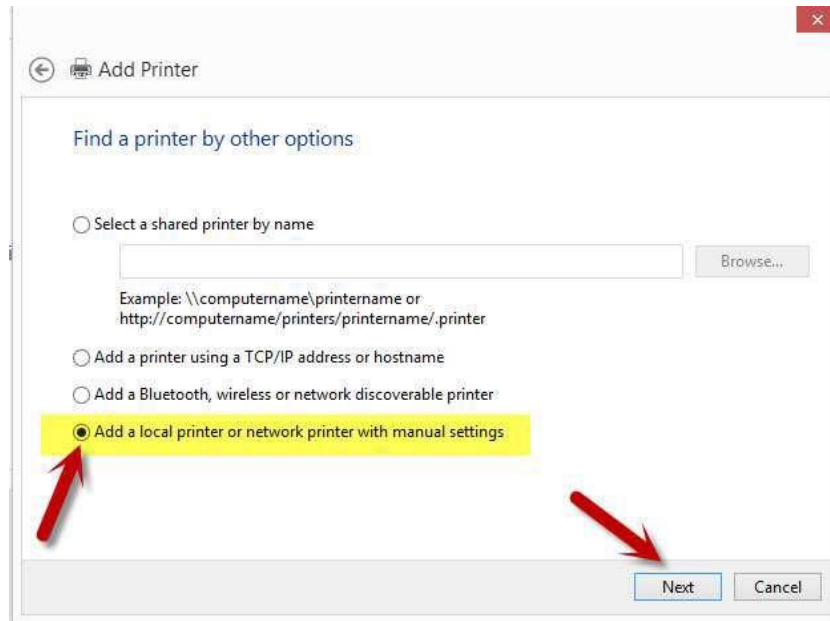


Step2: Please chose “the printer that I want isn’t listed” and chose ‘next”, it will be shown as below:

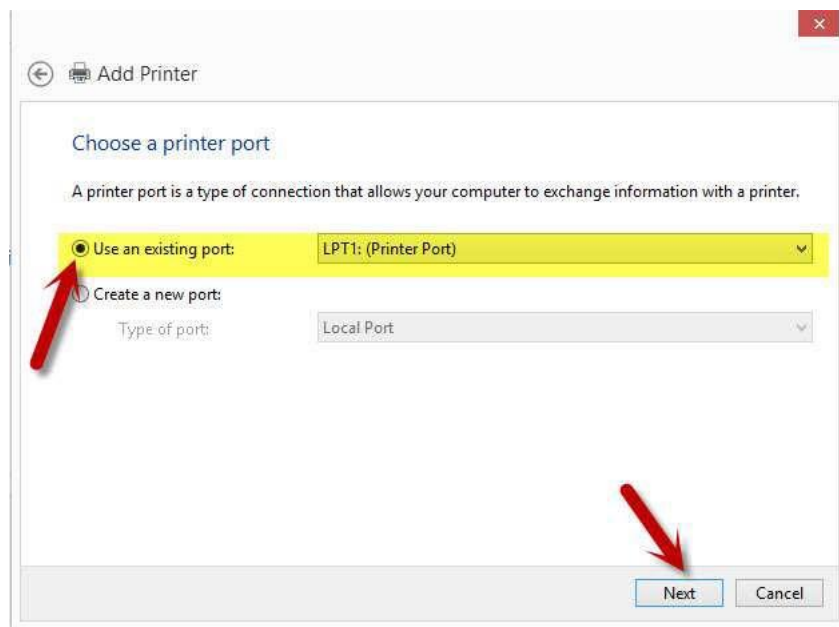


Step3: Please chose” adds a local printer or network printer with manual settings” and chose “Next”, it

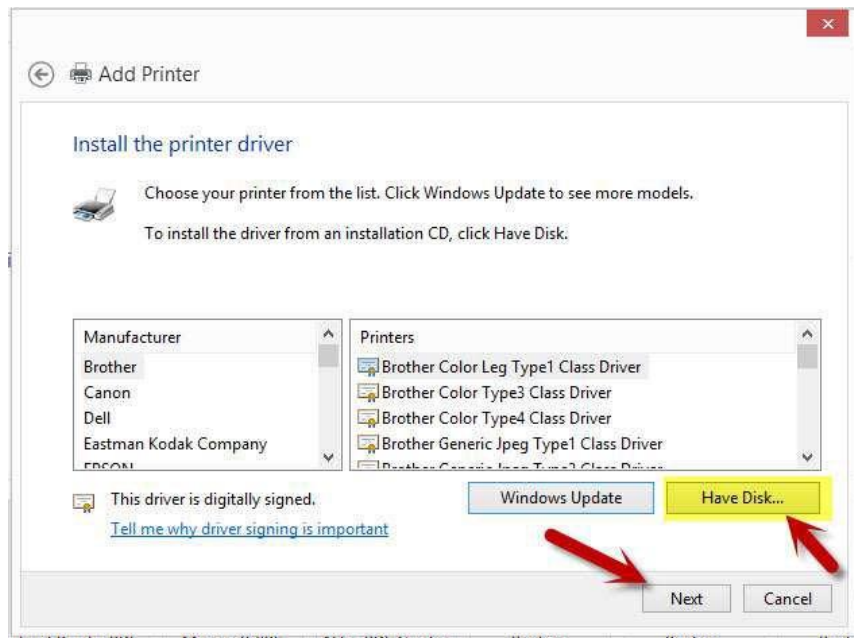
will be shown as below:



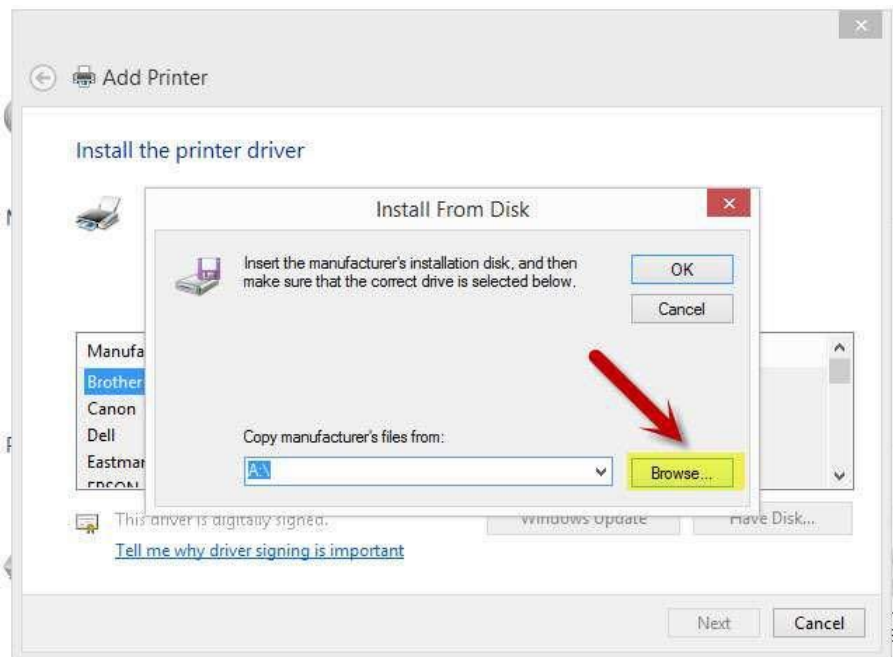
Step4: Please chose "Use an existing port" and select "Next", it will be shown as below:



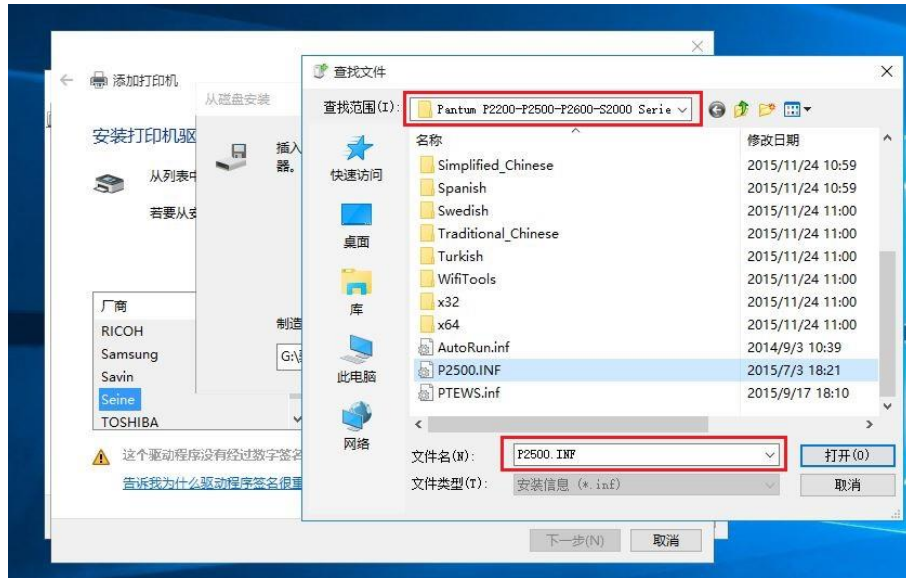
Step5: Please chose 'have disked" and click "Next", it will be shown as below:



Step6: Please chose “browse” when the windows pop up, it will be shown as below:



Step7: Please chose the “INF file” in the installation package and then chose “Next” it will be done.

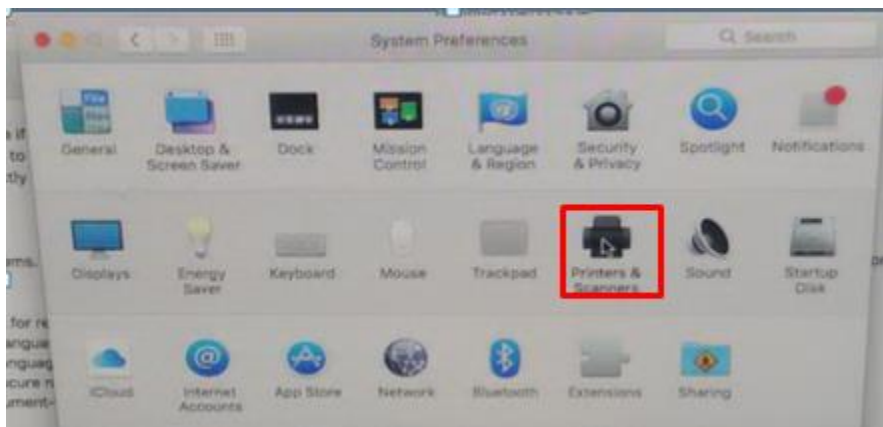


Step8: It will be finish to installation automatically after you pull up the printer’s USB cable.

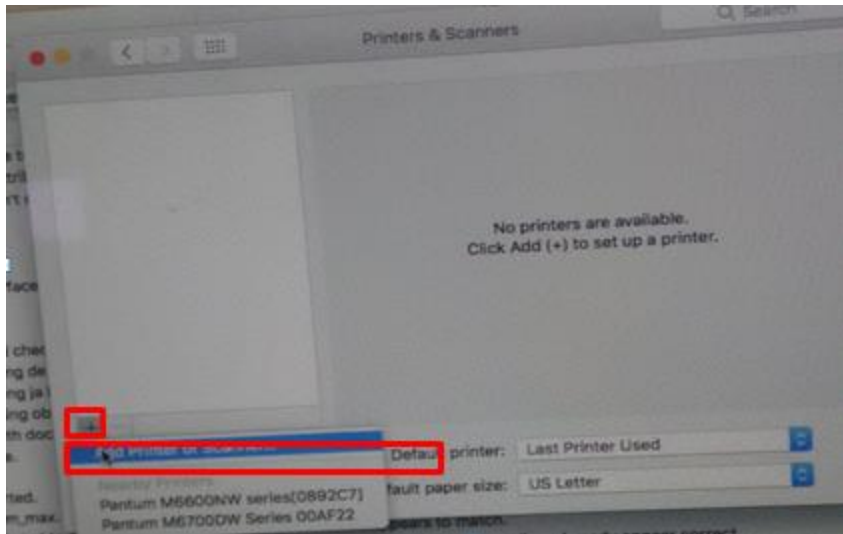
46. How to “add a printer “by manually under Mac?

Step1: At first, please follow up the instruction of the CD-ROM to install the driver with USB that is under the MAC system.

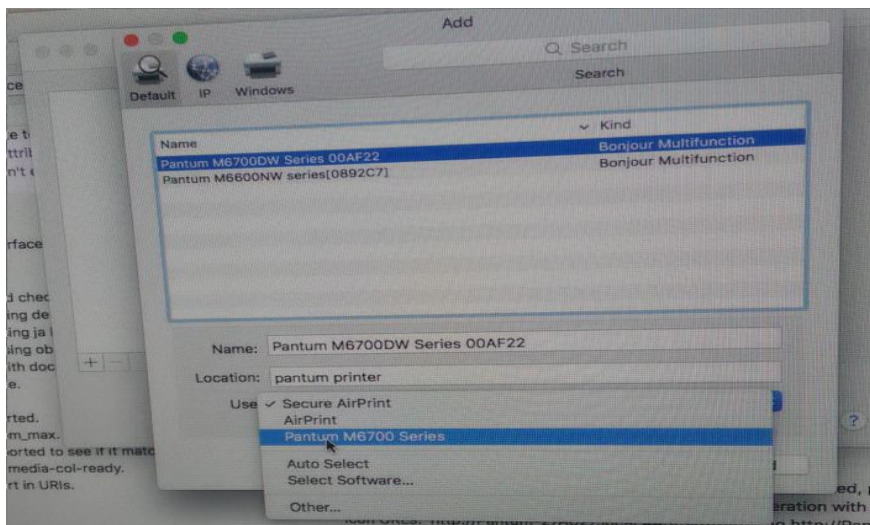
Step2: After installed the driver, please chose the Printer icon in PC and log in.



Step3: Click “+” to add the printer.

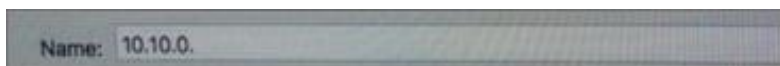


Step4: Please choose the corresponding model from installed printer when pop up the dialog box. Then chose the corresponding printer's driver which installed on PC. (It is needed to be the same with printer model.) After chose to save, it will be finished to install.



Remark: If the internet needs to set up manually. You can chose to IP modified at the forth step.

Modify the IP address need to match to the IP agreement.

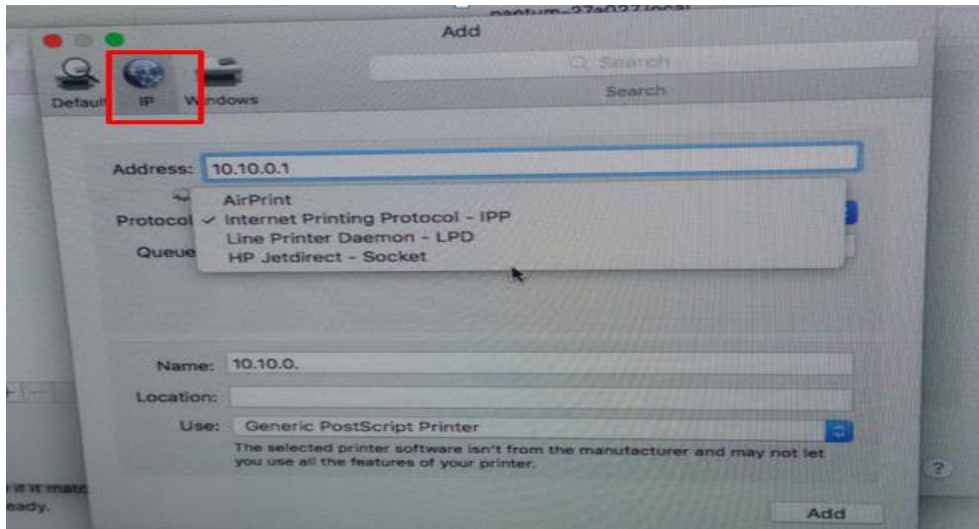


Here is the printer's name without modifications.



Please chose the corresponding driver which installed on PC.(it is need to be the same with printer model.)

Step5:After chose to save, it will be finished to install the internet printing.

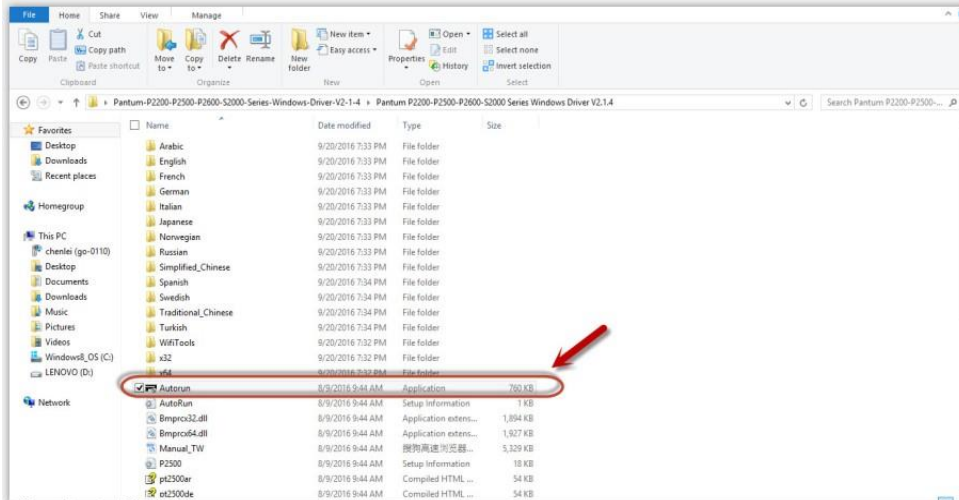


47. How to Download the User Manual Successfully?

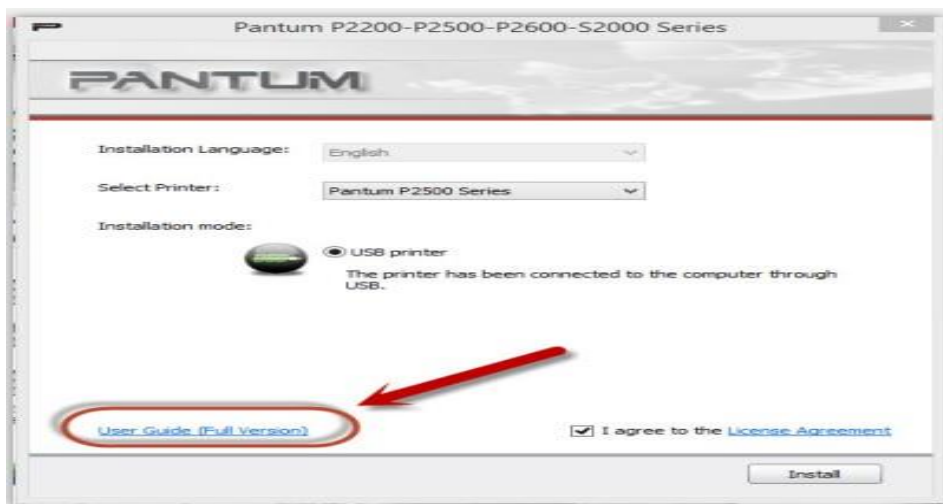
Here are two options for you to download the user manual for the printer's

Option A) Please check the user manual in the CD-ROM.

Step1: Open your CD-ROM file and double click "Auto run".

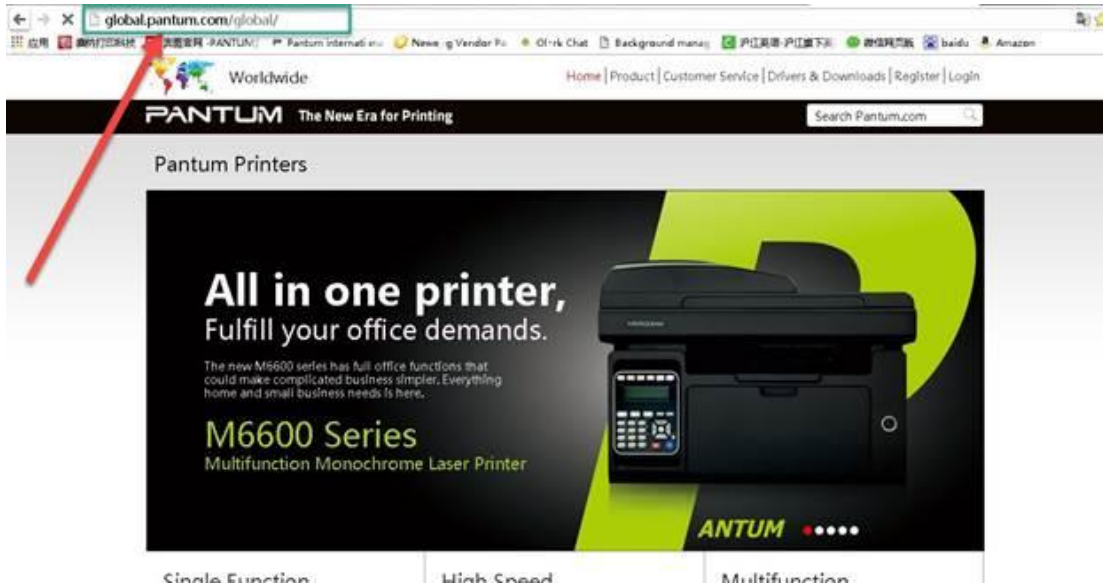


Step2: Click 'User Guide' at the left corner of the installation interface.

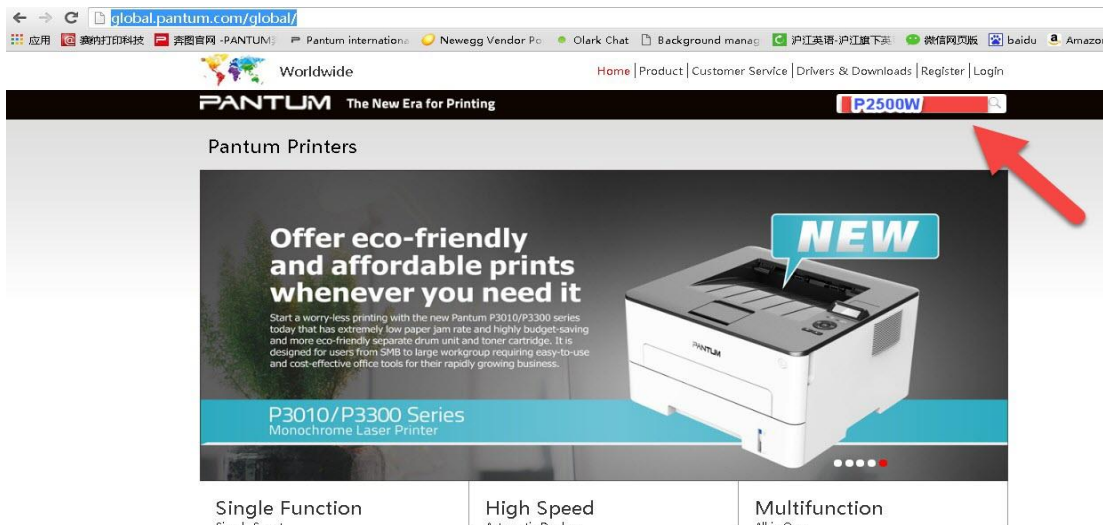


Option B) Please download the user manual from our official website.

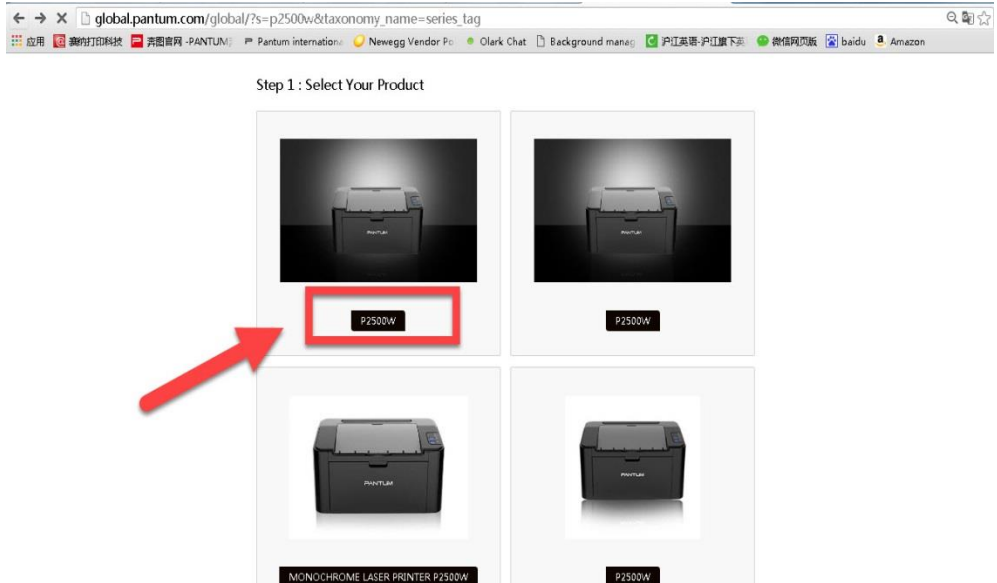
Step1: Please log in the website: <http://global.pantum.com/global/>.



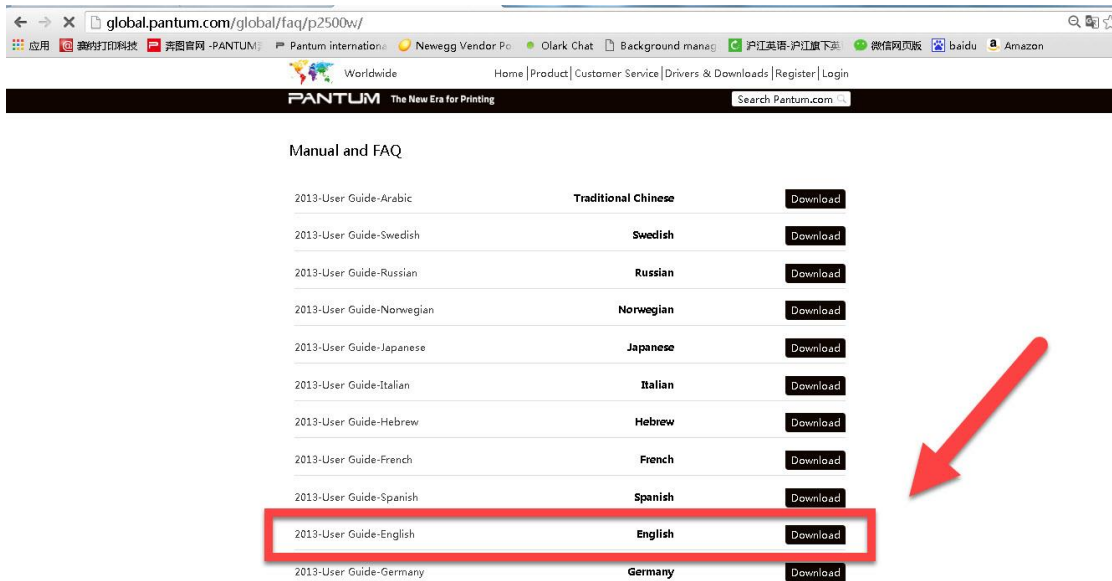
Step2: Enter your model of your printer in the blank of the below picture



Step3: Select the model of your printer.



Step4: Chose the corresponding language you are using which stat to download the user manual.



48. How to Print Information Pages from printer?

Press “continue /cancel” button on interface for 3 seconds to print out configuration page, and there is the printer information pages .

Printer Information

Product Name	:Pantum P3100DL
USB Vendor ID	:232B
Firmware Version	:1.0.1.7
Memory Size	:128MB
Printing Mode	:GDI
Product Serial No.	:AA2A000000

Cartridge Information

Cartridge Model	:PD-210
Remaining Amount of toner	:0%
Actual Pages Printed	:0
Average Coverage	:0%
Expected Pages Printed	:0

Print Information

Total Pages Printed	:564
Pages Printed With Different Paper Types	
A5	:1
A4/LETTER	:512
Legal/Folio	:1
B5/Executive	:1
Others	:49